

MIAMI, FLORIDA

AL-257 (FAA)

LOC/DME I-ROY 109.3 Chan 30	APP CRS 092°	Rwy Idg TDZE Apt Elev	8600 8 8
--	------------------------	-----------------------------	-------------------------------------

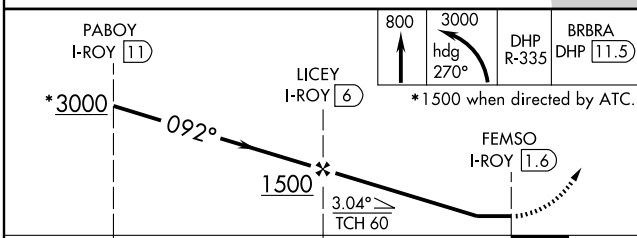
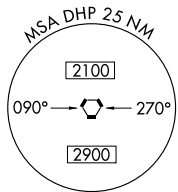
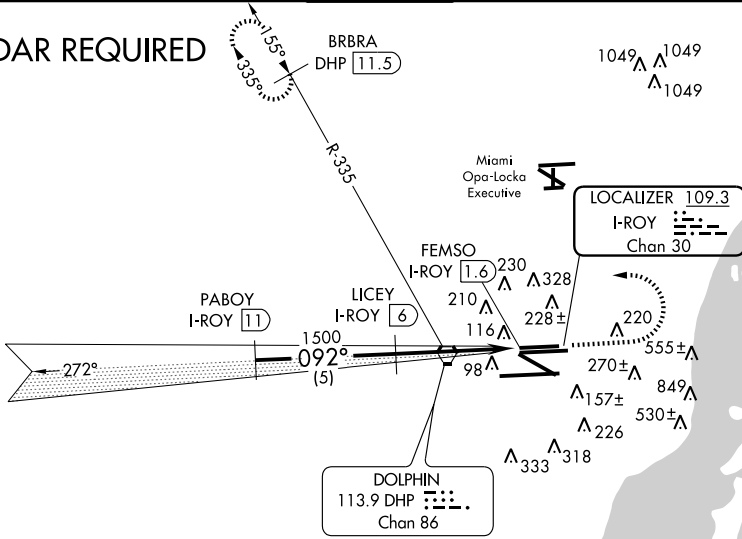
LOC/DME RWY 8L

MIAMI INTL (MIA)

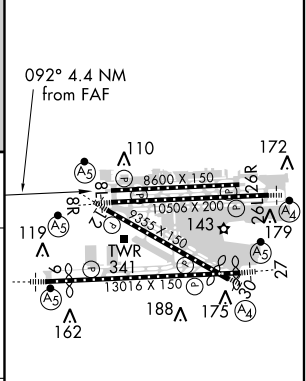
▽ MISSED APPROACH: Climb to 800 then climbing left turn to 3000 via heading 270° and DHP R-335 to BRBRA/11.5 DME and hold.

ATIS 119.15	MIAMI APP CON 124.85 322.3	MIAMI TOWER 118.3 256.9	GND CON 121.8 (8L/8R/12/26L/26R) 127.5 (9/27/30)	348.6	CLNC DEL 135.35
-----------------------	--------------------------------------	-----------------------------------	--	--------------	---------------------------

RADAR REQUIRED



ELEV 8	D TDZE 8
--------	-----------------



CATEGORY	A	B	C	D
5-8L	440/50	432 (500-1)	440/60 432 (500-1¼)	440-1½ 432 (500-1½)
CIRCLING	NA			

TDZ/CL Rwy 8R
MIRL Rwy 8L-26R
REIL Rwsy 8L and 26R
HIRL all Rwsy

SE-3, 15 DEC 2011 to 12 JAN 2012

SE-3, 15 DEC 2011 to 12 JAN 2012

MIAMI, FLORIDA
Orig-B 11293

25°48'N-80°17'W

MIAMI INTL (MIA) LOC/DME RWY 8L

MIAMI, FLORIDA

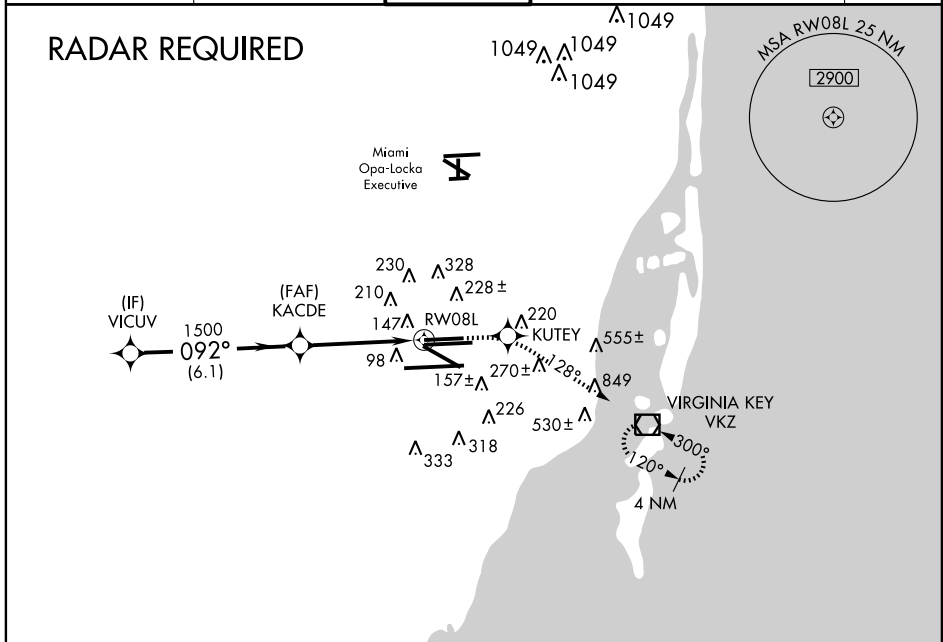
AL-257 (FAA)

WAAS CH 42703 W08A	APP CRS 092°	Rwy Idg 8600 TDZE 8 Apt Elev 8
--	------------------------	---

RNAV (GPS) RWY 8L

MIAMI INTL (MIA)

V W	For uncompensated Baro-VNAV systems, LNAV/VNAV NA below -15°C (5°F) or above 48°C (118°F). DME/DME RNP-0.3 NA. Visibility reduction by helicopters NA.	MISSED APPROACH: Climb to 2000 direct KUTEY and via 128° track to VIRGINIA KEY VOR/DME and hold.			
ATIS 119.15	MIAMI APP CON 124.85 322.3	MIAMI TOWER 118.3 256.9	GND CON 121.8 (8L/8R/12/26L/26R) 127.5 (9/27/30)	348.6	CLNC DEL 135.35



SE-3, 15 DEC 2011 to 12 JAN 2012

SE-3, 15 DEC 2011 to 12 JAN 2012

ELEV	8	TDZE	8
VICUV #1500 when assigned by ATC. 2000 KUTEY 128° tr VKZ			
*LNAV only			
#3000			
GS 3.00° TCH 60			
092° to RW08L			
KACDE			
*1.7 NM to RW08L			
RW08L			
CATEGORY	A	B	C
LPV DA		306-1	298 (300-1)
LNAV/VNAV DA		530-1¾	522 (600-1¾)
LNAV MDA	600-1	592 (600-1)	600-1½ 592 (600-1½)
CIRCLING	NA		
TDZ/CL Rwy 8R MIRL Rwy 8L-26R REIL Rwys 8L and 26R HIRL all Rwys			

MIAMI, FLORIDA
Amdt 1 11293

25°48'N-80°17'W

MIAMI INTL (MIA)

RNAV (GPS) RWY 8L


MIAMI, FLORIDA

AL-257 (FAA)

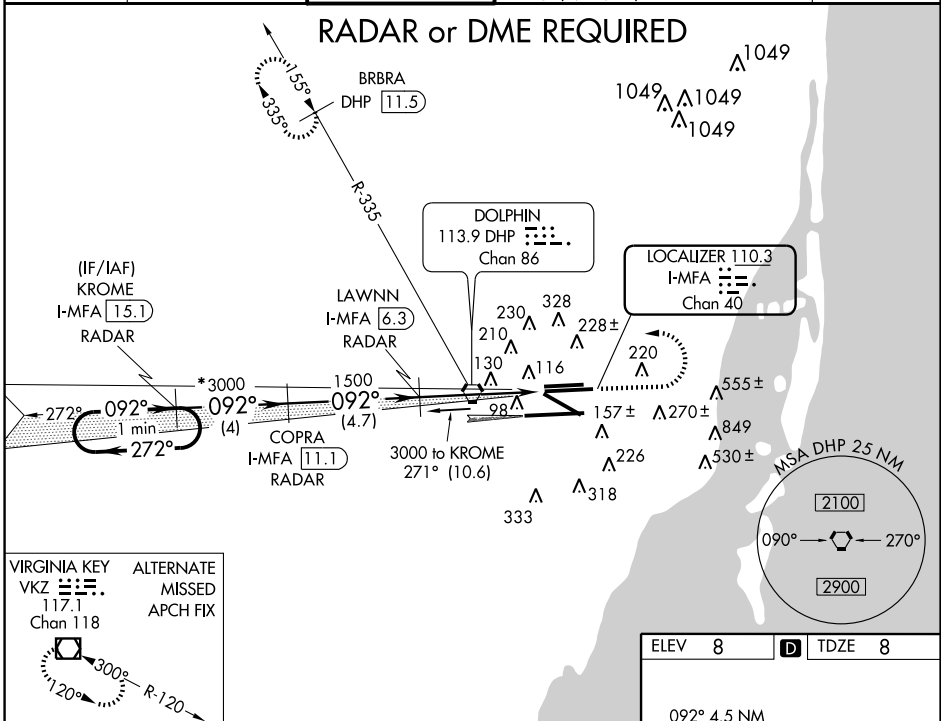
LOC/DME I-MFA 110.3 Chan 40	APP CRS 092°	Rwy Idg 10506 TDZE 8 Apt Elev 8
---	------------------------	--

ILS or LOC RWY 8R

MIAMI INTL (MIA)

<p>Simultaneous approach authorized with Rwy 9. Autopilot coupled approach not authorized below 500 feet. DME required. S-LOC minima not authorized during simultaneous operations.</p>	<p>MALSR </p>	<p>MISSED APPROACH: Climb to 800 then climbing left turn to 3000 via heading 270° and DHP R-335 to BRBRA/DHP 11.5 DME and hold.</p>
---	---	---

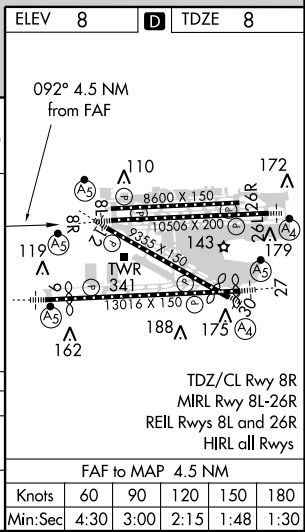
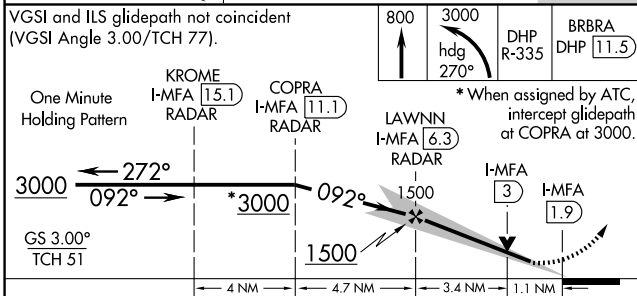
ATIS 119.15	MIAMI APP CON 124.85 322.3	MIAMI TOWER 118.3 256.9	GND CON 121.8 (8L/8R/12/26L/26R) 127.5 (9/27/30)	CLNC DEL 135.35
-----------------------	--------------------------------------	-----------------------------------	--	---------------------------



SE-3, 15 DEC 2011 to 12 JAN 2012

SE-3, 15 DEC 2011 to 12 JAN 2012

VIRGINIA KEY VYZ 117.1 Chan 118	ALTERNATE MISSED APCH FIX
---------------------------------------	---------------------------------



CATEGORY	A	B	C	D
S-ILS 8R		208/18	200 (200-½)	
S-LOC 8R	560/24	552 (600-½)	560/50 552 (600-1)	560/60 552 (600-1½)

MIAMI, FLORIDA
Amdt 30A 11293

25°48'N-80°17'W


ILS or LOC RWY 8R

APP CRS	Rwy Idg	10506
092°	TDZE	8
	Apt Elev	8

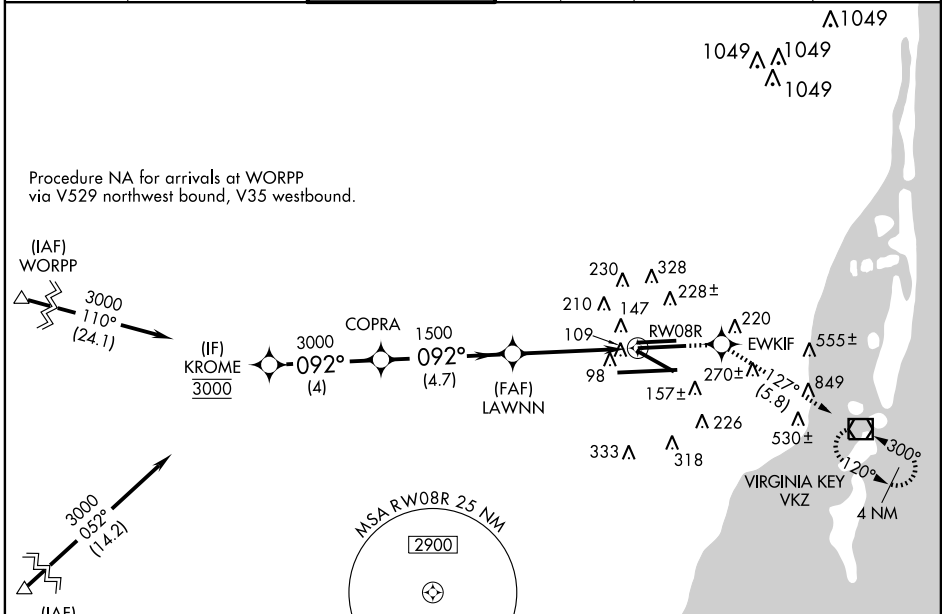
RNAV (RNP) Y RWY 8R

MIAMI INTL (MIA)

NA For inoperative MALSR, increase RNP 0.11 all Cats visibility to RVR 6000, RNP 0.30 all Cats visibility to 1½.
 For uncompensated Baro-VNAV systems, procedure NA below 6°C (42°F) or above 49°C (120°F). GPS Required.
 * RNP 0.11 missed approach requires minimum climb of 330 feet per NM to 600.

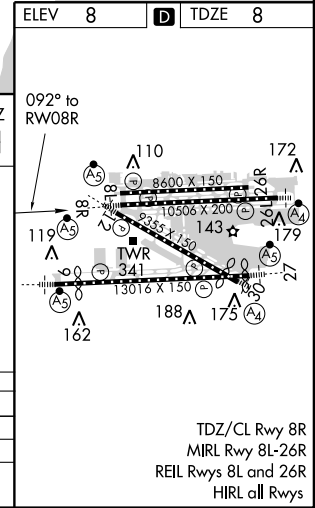
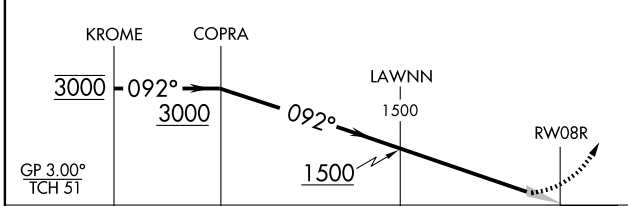
MALSR
 MISSED APPROACH: Climb to 3000 direct EWKIF and via 127° track to VKZ VOR/DME and hold, continue climb-in-hold to 3000.

ATIS	MIAMI APP CON	MIAMI TOWER	GND CON	CLNC DEL
119.15	124.85 322.3	118.3 256.9	121.8 (8L/8R/12/26L/26R) 127.5 (9/27/30)	348.6 135.35



(IAF) FOGSO
 Procedure NA for arrivals at FOGSO via V157 westbound.

Procedure Turn NA
 VGSI and RNAV glidepath not coincident (VGSI Angle 3.00/TCH 77).
 3000 ↑ EWKIF 127° tr VKZ



CATEGORY	A	B	C	D
RNP 0.11 DA*		354/32	346 (400-½)	
RNP 0.30 DA		458/50	450 (500-1)	

AUTHORIZATION REQUIRED

SE-3, 15 DEC 2011 to 12 JAN 2012


SE-3, 15 DEC 2011 to 12 JAN 2012

RNAV (GPS) Z RWY 8R

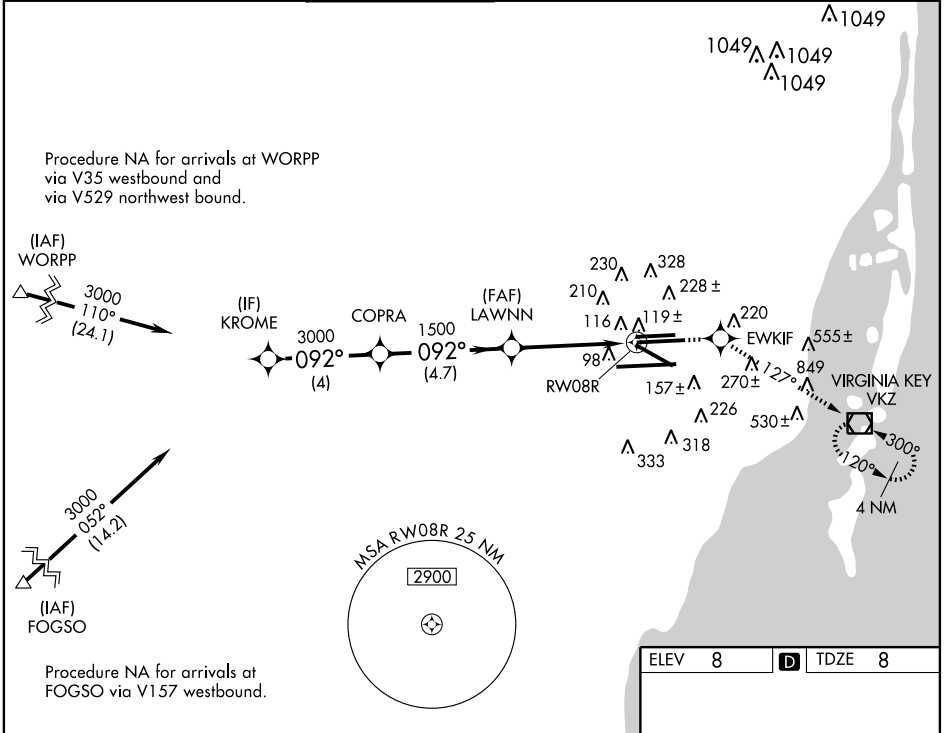
MIAMI INTL (MIA)

WAAS CH 97404 W08A	APP CRS 092°	Rwy Idg 10506 TDZE 8 Apt Elev 8
--	------------------------	--

▼ For inoperative MALS, increase LPV all Cats visibility to RVR 5000, and LNAV/VNAV all Cats visibility to 1¾. For uncompensated Baro-VNAV systems, LNAV/VNAV NA below -15°C (5°F) or above 48°C (118°F). DME/DME RNP-0.3 NA.

MALS  MISSED APPROACH: Climb to 3000 direct EWKIF and via 127° track to VIRGINIA KEY VOR/DME and hold.

ATIS 119.15	MIAMI APP CON 124.85 322.3	MIAMI TOWER 118.3 256.9	GND CON 121.8 (8L/8R/12/26L/26R) 127.5 (9/27/30)	348.6	CLNC DEL 135.35
-----------------------	--------------------------------------	-----------------------------------	--	--------------	---------------------------



SE-3, 15 DEC 2011 to 12 JAN 2012

SE-3, 15 DEC 2011 to 12 JAN 2012

Procedure Turn NA	VGSi and RNAV glidepath not coincident (VGSi Angle 3.00/TCH 77).			
	KROME	COPRA	LAWNN	RW08R
	3000	092°	092°	1500
GS 3.00° TCH 51		3000		
	4 NM	4.7 NM	2.9 NM	1.6 NM
CATEGORY	A	B	C	D
LPV DA		273/24	265 (300-½)	
LNAV/VNAV DA		530/60	522 (600-1¼)	
LNAV MDA	600/24	592 (600-½)	600/50 592 (600-1)	600/60 592 (600-1¼)

