

APP CRS	Rwy Idg	8579
124°	TDZE	8
	Apt Elev	8

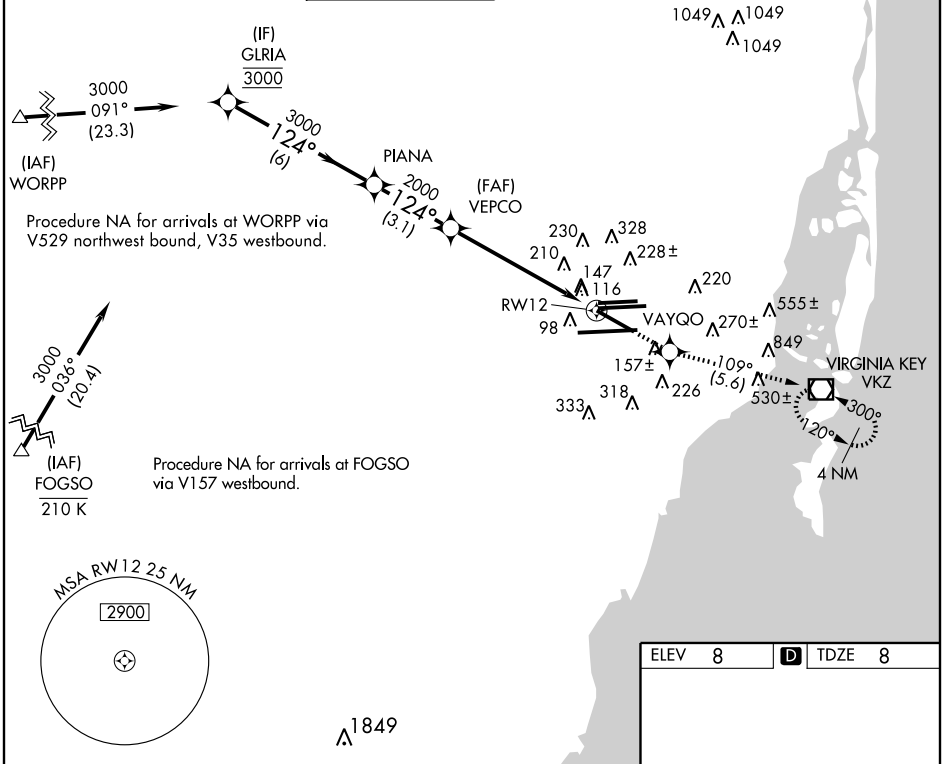
RNAV (RNP) Y RWY 12

MIAMI INTL (MIA)

GPS Required. For inoperative MALSRR, increase 0.30 all Cats visibility to 1½. For uncompensated Baro-VNAV systems, procedure NA below 6°C (42°F) or above 49°C (120°F).

MALSRR MISSED APPROACH: Climb to 3000 direct VAYQO and via 109° track to VKZ VOR/DME and hold, continue climb-in-hold to 3000.

ATIS 119.15	MIAMI APP CON 124.85 322.3	MIAMI TOWER 118.3 256.9	GND CON 121.8 (8L/8R/12/26L/26R) 127.5 (9/27/30)	CLNC DEL 135.35
-----------------------	--------------------------------------	-----------------------------------	--	---------------------------



SE-3, 15 DEC 2011 to 12 JAN 2012

SE-3, 15 DEC 2011 to 12 JAN 2012

Procedure Turn NA		VGSI and RNAV glidepath not coincident (VGSI Angle 3.00/TCH 72).	3000 \uparrow	VAYQO \diamond	109° tr	VKZ \square
GLRIA		PIANA	VEPCO	RWY 12		
3000		3000	2000	124° to RWY 12		
GP 3.00° TCH 56						
6 NM		3.1 NM	6 NM			
CATEGORY	A	B	C	D		
RNP 0.30 DA	461/50		453 (500-1)			
AUTHORIZATION REQUIRED						

ELEV	8	TDZE	8
------	---	------	---


TDZ/CL Rwy 8R
MIRL Rwy 8L-26R
REIL Rwys 8L and 26R
HIRL all Rwys

ILS or LOC RWY 12

MIAMI INTL (MIA)

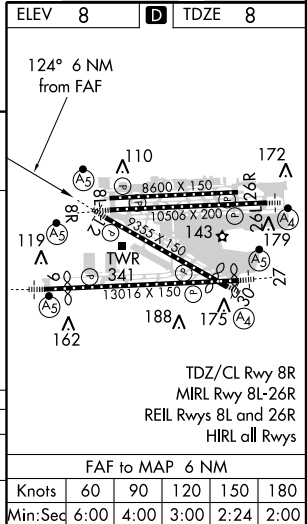
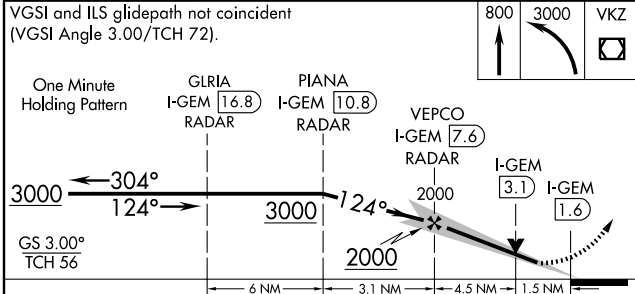
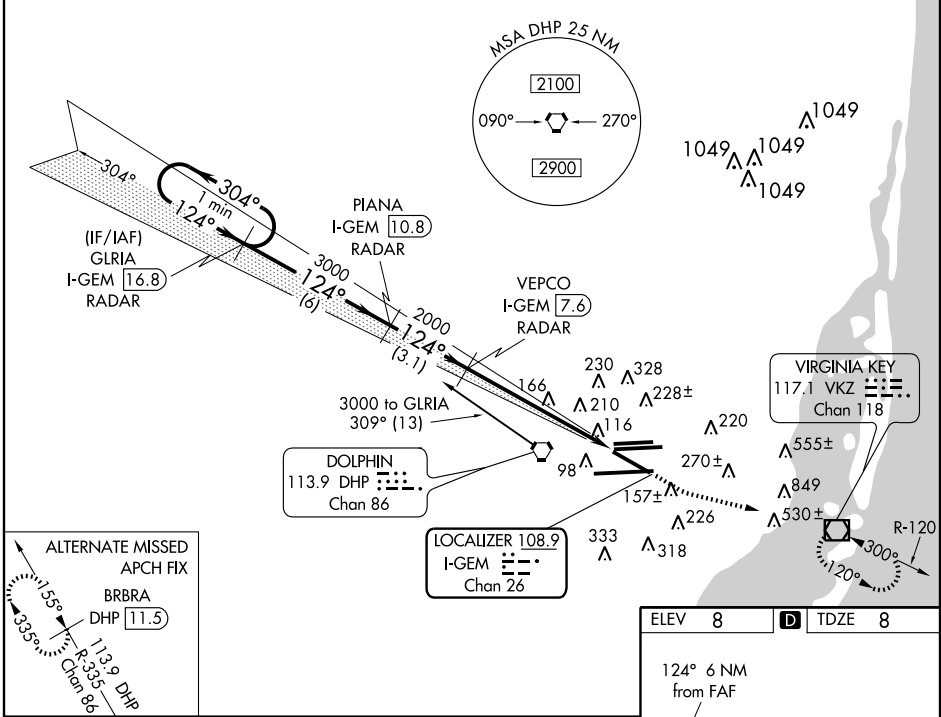
LOC/DME I-GEM 108.9 Chan 26	APP CRS 124°	Rwy Idg TDZE Apt Elev	8579 8 8
---	------------------------	-----------------------------	-------------------------------------

▼ For inoperative MALS/R, increase S-ILS 12 all Cats visibility to 1/4, increase S-LOC 12 Cats A and B visibility to RVR 5000.
DME or RADAR Required.
Visibility reduction by helicopters NA.

MALS/R


MISSED APPROACH: Climb to 800 then climbing left turn to 3000 direct VKZ VOR/DME and hold.

ATIS 119.15	MIAMI APP CON 124.85 322.3	MIAMI TOWER 118.3 256.9	GND CON 121.8 (8L/8R/12/26L/26R) 127.5 (9/27/30)	348.6	CLNC DEL 135.35
-----------------------	--------------------------------------	-----------------------------------	--	--------------	---------------------------



CATEGORY	A	B	C	D
S-ILS 12	376/40 368 (400-¾)			
S-LOC 12	560/40	552 (600-¾)	560/50 552 (600-1)	560/60 552 (600-1¼)

SE-3, 15 DEC 2011 to 12 JAN 2012

SE-3, 15 DEC 2011 to 12 JAN 2012

MIAMI, FLORIDA


AL-257 (FAA)

RNAV (GPS) Z RWY 12

MIAMI INTL (MIA)

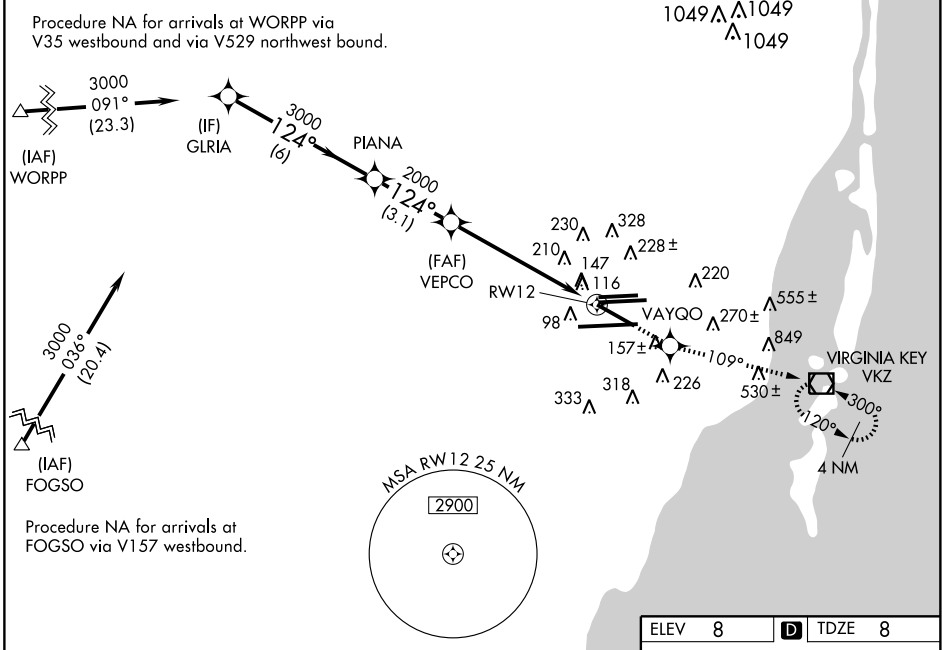
WAAS CH 61204 W12A	APP CRS 124°	Rwy Idg 8579 TDZE 8 Apt Elev 8
--	------------------------	---

W For inoperative MALSR, increase LPV DA all Cats visibility to 1½, increase LNAV MDA Cats A and B visibility to RVR 5000.
W For uncompensated Baro-VNAV systems, LNAV/VNAV NA below -15°C (5°F) or above 49°C (120°F). DME/DME RNP-0.3 NA.
 Visibility reduction by helicopters NA.

MALSR


MISSED APPROACH: Climb to 3000 direct VAYGO and via 109° track to VKZ VOR/DME and hold, continue climb-in-hold to 3000.

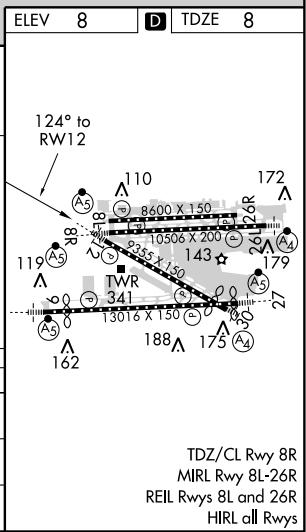
ATIS 119.15	MIAMI APP CON 124.85 322.3	MIAMI TOWER 118.3 256.9	GND CON 121.8 (8L/8R/12/26L/26R) 127.5 (9/27/30)	CLNC DEL 348.6 135.35
-----------------------	--------------------------------------	-----------------------------------	--	---



SE-3, 15 DEC 2011 to 12 JAN 2012

SE-3, 15 DEC 2011 to 12 JAN 2012

VGS1 and RNAV glidepath not coincident (VGS1 Angle 3.00/TCH 72).		3000	VAYGO	109° tr	VKZ
Procedure Turn NA		GLRIA	PIANA	*LNAV only	
3000 — 124° — 3000 — 124° — 2000		*1.6 NM to RW12			
GS 3.00° TCH 56					
		6 NM	3.1 NM	4.4 NM	1.6 NM
CATEGORY		A	B	C	D
LPV DA		390/40		382 (400-¾)	
LNAV/VNAV DA		506/60		498 (500-1¼)	
LNAV MDA		600/40	592 (600-¾)	600/50	600/60
				592 (600-1)	592 (600-1¼)



MIAMI, FLORIDA
 Amdt 1A 11293

25°48'N-80°17'W

RNAV (GPS) Z RWY 12

MIAMI INTL (MIA)