

APP CRS	Rwy Idg	7913
305°	TDZE	8
	Apt Elev	8

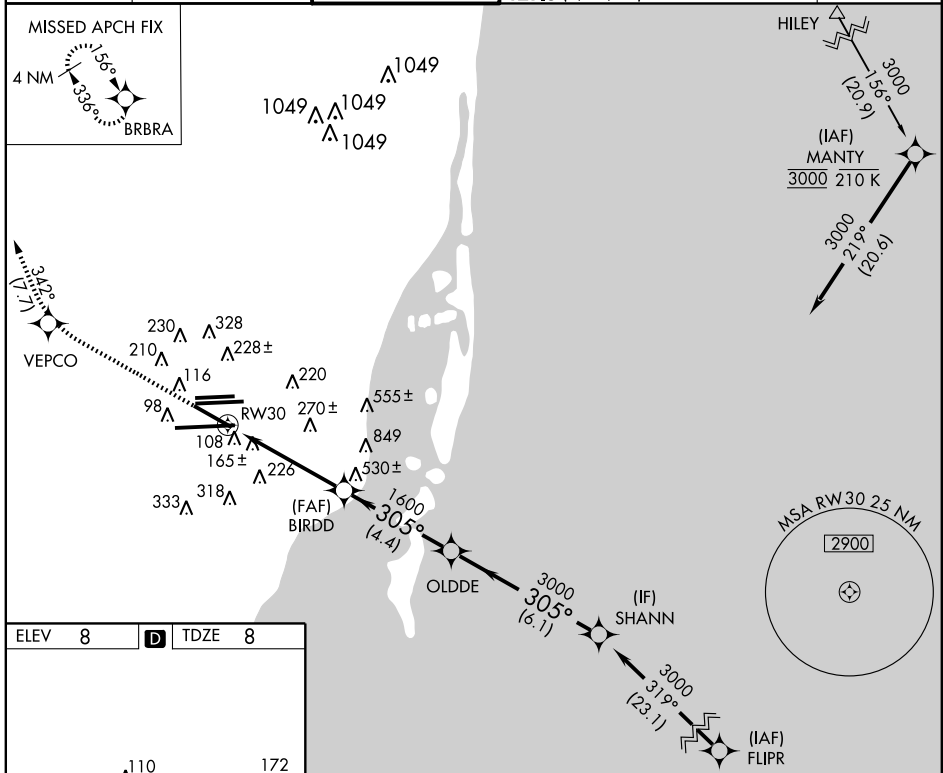
RNAV (RNP) Y RWY 30

MIAMI INTL (MIA)

NA For inoperative MALS, increase RNP 0.23 all Cats visibility to 1½, RNP 0.30 all Cats to 1¾. GPS Required.
For uncompensated Baro-VNAV systems, procedure NA below 6°C (42°F) or above 48°C (119°F).

MALS
MISSED APPROACH: Climb to 3000 direct VEPCO and via 342° track to BRBRA and hold.

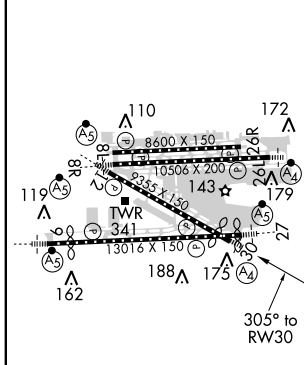
ATIS 119.15	MIAMI APP CON 124.85 322.3	MIAMI TOWER 118.3 256.9	GND CON 121.8 (8L/8R/12/26L/26R) 127.5 (9/27/30)	348.6	CLNC DEL 135.35
-----------------------	--------------------------------------	-----------------------------------	--	--------------	---------------------------



SE-3, 15 DEC 2011 to 12 JAN 2012

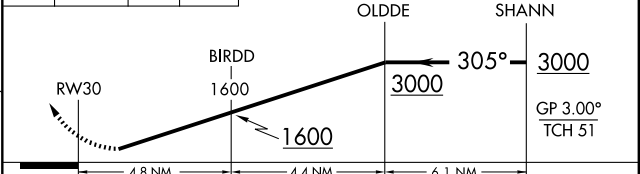
SE-3, 15 DEC 2011 to 12 JAN 2012

ELEV 8	D	TDZE 8
--------	----------	--------



TDZ/CL Rwy 8R
MIRL Rwy 8L-26R
REIL Rwys 8L and 26R
HIRL all Rwys

3000 VEPCO 342° tr BRBRA VGSI and RNAV glidepath not coincident (VGSI Angle 3.00/TCH 71). Procedure Turn NA



CATEGORY	A	B	C	D
RNP 0.23 DA		426-1¼	418 (500-1¼)	
RNP 0.30 DA		521-1½	513 (600-1½)	

AUTHORIZATION REQUIRED

MIAMI, FLORIDA

AL-257 (FAA)

ILS or LOC RWY 30

MIAMI INTL (MIA)

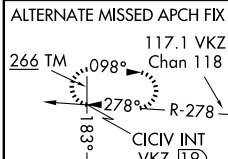
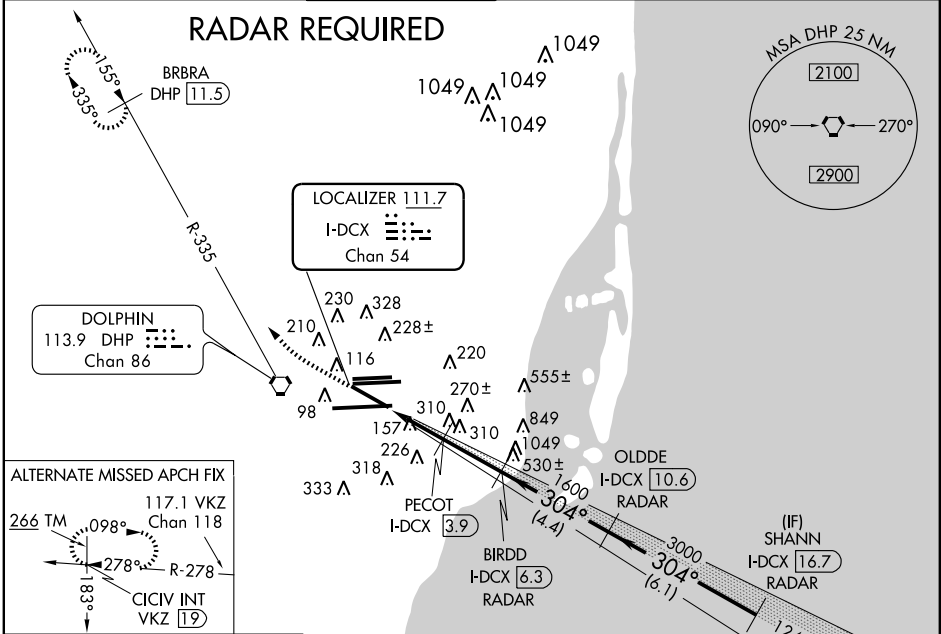
LOC/DME I-DCX 111.7 Chan 54	APP CRS 304°	Rwy Idg TDZE Apt Elev	7913 8 8
---	------------------------	-----------------------------	-------------------------------------

▼ Inoperative table does not apply to S-LOC 30 Cats B and C.
▲ Inoperative table does not apply to PECOT
▲ FIX minimums S-LOC 30 Cat C. DME Required.

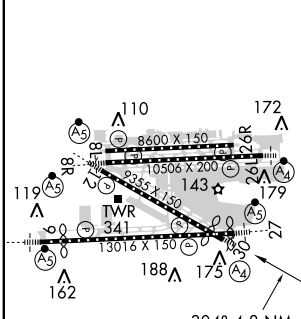
MALS

MISSED APPROACH: Climb to 800 then
 climbing right turn to 2000 via heading 310°
 and DHP R-335 to BRBRA/11.5 DME and hold.

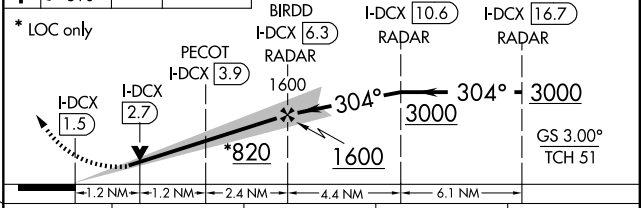
ATIS 119.15	MIAMI APP CON 124.85 322.3	MIAMI TOWER 118.3 256.9	GND CON 121.8 (8L/8R/12/26L/26R) 127.5 (9/27/30)	CLNC DEL 135.35
-----------------------	--------------------------------------	-----------------------------------	--	---------------------------



ELEV 8	D	TDZE 8
---------------	----------	---------------



800	2000	DHP R-335	BRBRA DHP 11.5	VGSI and ILS glidepath not coincident (VGSI Angle 3.00/TCH 71).
-----	------	-----------	----------------	---



CATEGORY	A	B	C	D
S-ILS 30	220/40 212 (300-¾)			
S-LOC 30	820/40 812 (900-¾)	820/60 812 (900-1¼)	820-2½ 812 (900-2½)	820-2¾ 812 (900-2¾)
PECOT FIX MINIMUMS				
S-LOC 30	460/40 452 (500-¾)	460/60 452 (500-1¼)	460/60 452 (500-1¼)	460-1½ 452 (500-1½)

FAF to MAP 4.8 NM					
Knots	60	90	120	150	180
Min:Sec	4:48	3:12	2:24	1:55	1:36

MIAMI, FLORIDA
 Amdt 1A 11293

25°48'N-80°17'W

ILS or LOC RWY 30

SE-3, 15 DEC 2011 to 12 JAN 2012

SE-3, 15 DEC 2011 to 12 JAN 2012

MIAMI, FLORIDA

AL-257 (FAA)

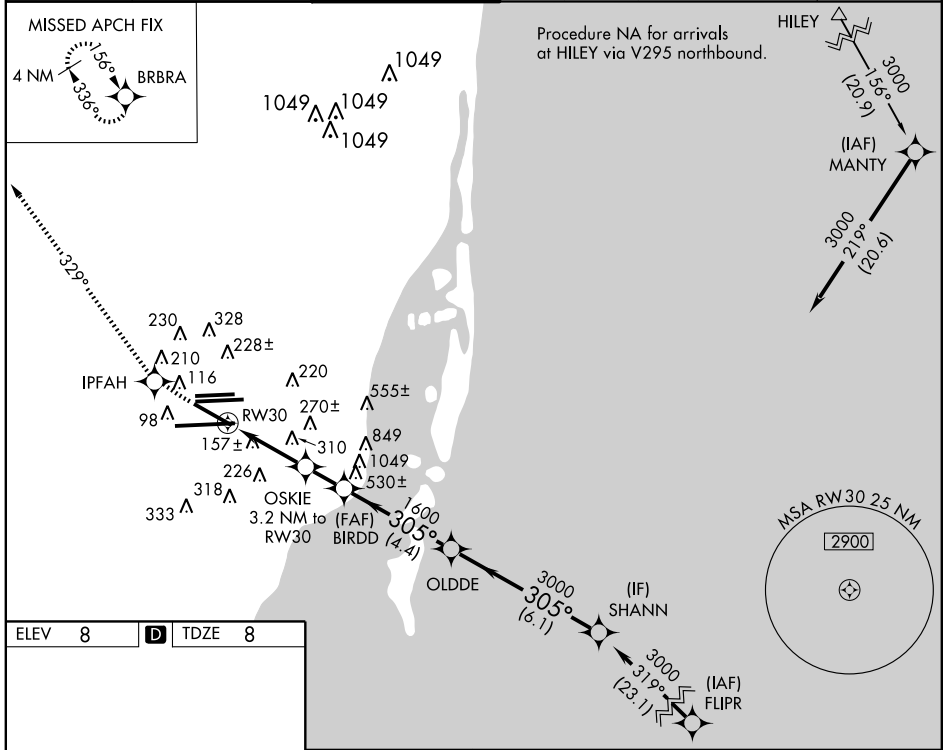
WAAS CH 40105 W30A	APP CRS 305°	Rwy Idg TDZE Apt Elev	7913 8 8
---------------------------------	------------------------	-----------------------------	-------------------------------------

RNAV (GPS) Z RWY 30

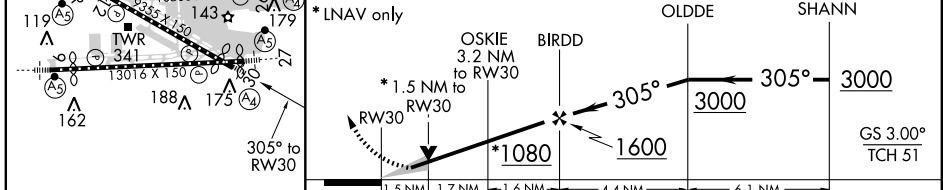
MIAMI INTL (MIA)

Inoperative table does not apply to LNAV Cat C and D. DME/DME RNP-0.3 NA	MALS	MISSED APPROACH: Climb to 3000 direct IPFAH and via 329° track to BRBRA and hold.

ATIS 119.15	MIAMI APP CON 124.85 322.3	MIAMI TOWER 118.3 256.9	GND CON 121.8 (8L/8R/12/26L/26R) 127.5 (9/27/30)	348.6	CLNC DEL 135.35
-----------------------	--------------------------------------	-----------------------------------	--	--------------	---------------------------



ELEV 8	D	TDZE 8			
			329° tr		Procedure Turn NA



TDZ/CL Rwy 8R MIRL Rwy 8L-26R REIL Rwy 8L and 26R HIRL all Rwy				
CATEGORY	A	B	C	D
LPV DA	285/50 277 (300-1)			
LNAV MDA	560/40	552 (600-¾)	560-1½ 552 (600-1½)	560-1¾ 552 (600-1¾)

MIAMI, FLORIDA
Amdt 1 11293

25°48'N-80°17'W

RNAV (GPS) Z RWY 30

MIAMI INTL (MIA)

SE-3, 15 DEC 2011 to 12 JAN 2012

SE-3, 15 DEC 2011 to 12 JAN 2012