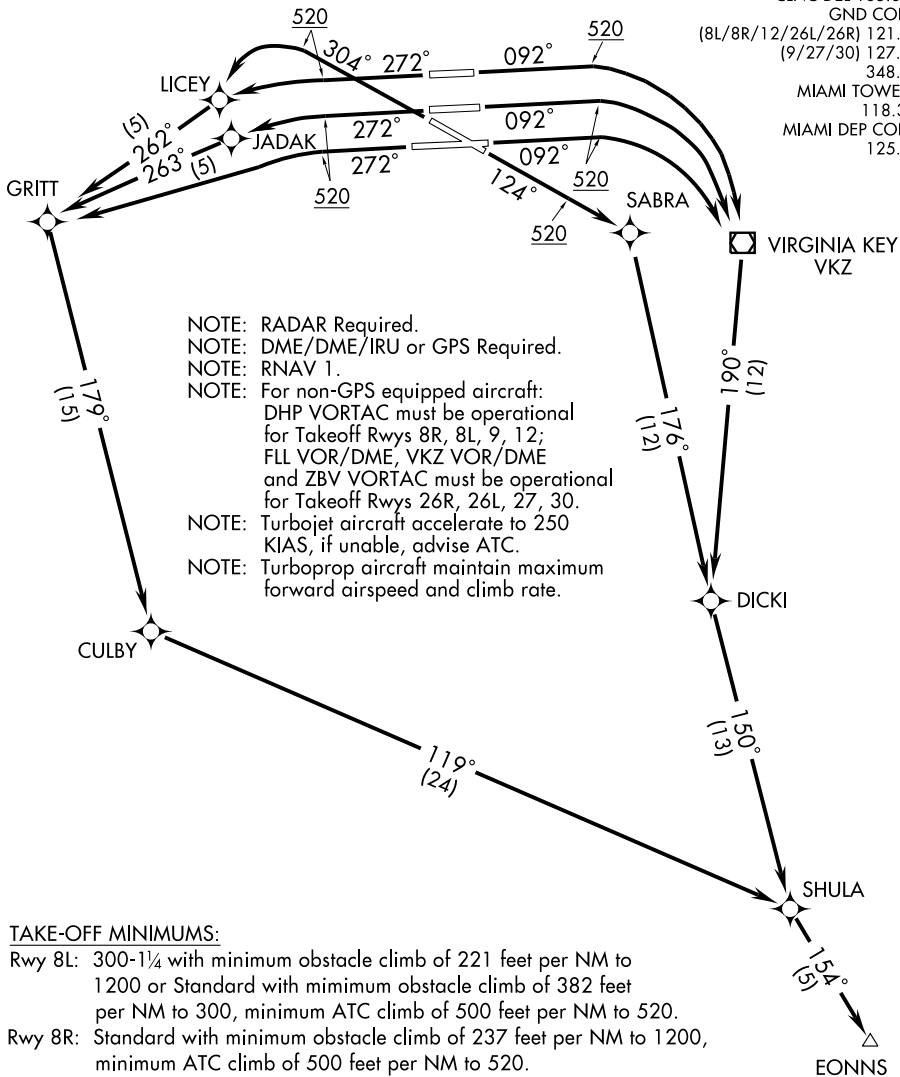


EONNS ONE DEPARTURE (RNAV)

ATIS 133.675
 CLNC DEL 135.35
 GND CON
 (8L/8R/12/26L/26R) 121.8
 (9/27/30) 127.5
 348.6
 MIAMI TOWER
 118.3
 MIAMI DEP CON
 125.5



SE-3, 15 DEC 2011 to 12 JAN 2012

SE-3, 15 DEC 2011 to 12 JAN 2012

NOTE: Chart not to scale.

(CONTINUED ON NEXT PAGE)

EONNS ONE DEPARTURE (RNAV)

EONNS ONE DEPARTURE (RNAV)

DEPARTURE ROUTE DESCRIPTION



TAKE-OFF RUNWAYS 8L, 8R, 9: Climb heading 092° to 520, then right turn direct VKZ VOR/DME, then via depicted route to EONNS, thence. . . .

TAKE-OFF RUNWAY 12: Climb heading 124° to 520, then right turn direct SABRA, then via depicted route to EONNS, thence. . . .

TAKE-OFF RUNWAY 26R: Climb heading 272° to 520, then left turn direct LICEY, then via depicted route to EONNS, thence. . . .

TAKE-OFF RUNWAY 26L: Climb heading 272° to 520, then left turn direct JADAK, then via depicted route to EONNS, thence. . . .

TAKE-OFF RUNWAY 27: Climb heading 272° to 520, then left turn direct GRITT, then left turn via track 179° to CULBY, then via depicted route to EONNS, thence. . . .

TAKE-OFF RUNWAY 30: Climb heading 304° to 520, then left turn direct LICEY, then via depicted route to EONNS, thence. . . .

. . . . Maintain 5000 or ATC assigned altitude. Expect further clearance to filed altitude within 10 minutes after departure.

TAKE-OFF OBSTACLES:

NOTE: Rwy 8L, Bldg 3391' from DER, 1024' left of centerline, 160' AGL/172' MSL. Glideslope Antenna 804' from DER, 501' right of centerline, 32' AGL/46' MSL. Multiple Towers and Bldgs beginning 1350' from DER, 691' left of centerline, up to 150' AGL/164' MSL.

NOTE: Rwy 8R, Tree 4064' from DER, 959' right of centerline, 98' AGL/112' MSL. Antenna and Multiple Trees beginning 2719' from DER, 194' left of centerline, up to 85' AGL/98' MSL.

NOTE: Rwy 9, Light 1232' from DER, 785' left of centerline, 39' AGL/48' MSL.

NOTE: Rwy 12, Windsock 22' from DER, 438' right of centerline, 21' AGL/30' MSL. Railroad beginning 4' from DER, 356' right of centerline, 23' AGL/28' MSL. Building and Tree beginning 1064' from DER, 118' right of centerline, up to 94' AGL/108' MSL.

Windsock 681' from DER, 345' left of centerline, 21' AGL/30' MSL.

NOTE: Rwy 26R, Tower, Building, Multiple Light Poles and Trees beginning 741' from DER, 1' right of centerline, up to 66' AGL/80' MSL. Pole, Bldg, and Tower beginning 255' from DER, 5' left of centerline, up to 34' AGL/48' MSL.

NOTE: Rwy 26L, Tower and Multiple Trees beginning 1306' from DER, 638' right of centerline, up to 63' AGL/77' MSL. Tree and Light Pole beginning 1773' from DER, 568' left of centerline, up to 61' AGL/75' MSL

NOTE: Rwy 27, Railroad, Tree, and Multiple Light Poles beginning 750' from DER, 94' left of centerline, up to 62' AGL/76' MSL.

NOTE: Rwy 30, Pole, Multiple Towers and Trees beginning 1414' from DER, 189' right of centerline, up to 120' AGL/125' MSL. Tree 2058' from DER, 785' left of centerline, 52' AGL/66' MSL.

SE-3, 15 DEC 2011 to 12 JAN 2012

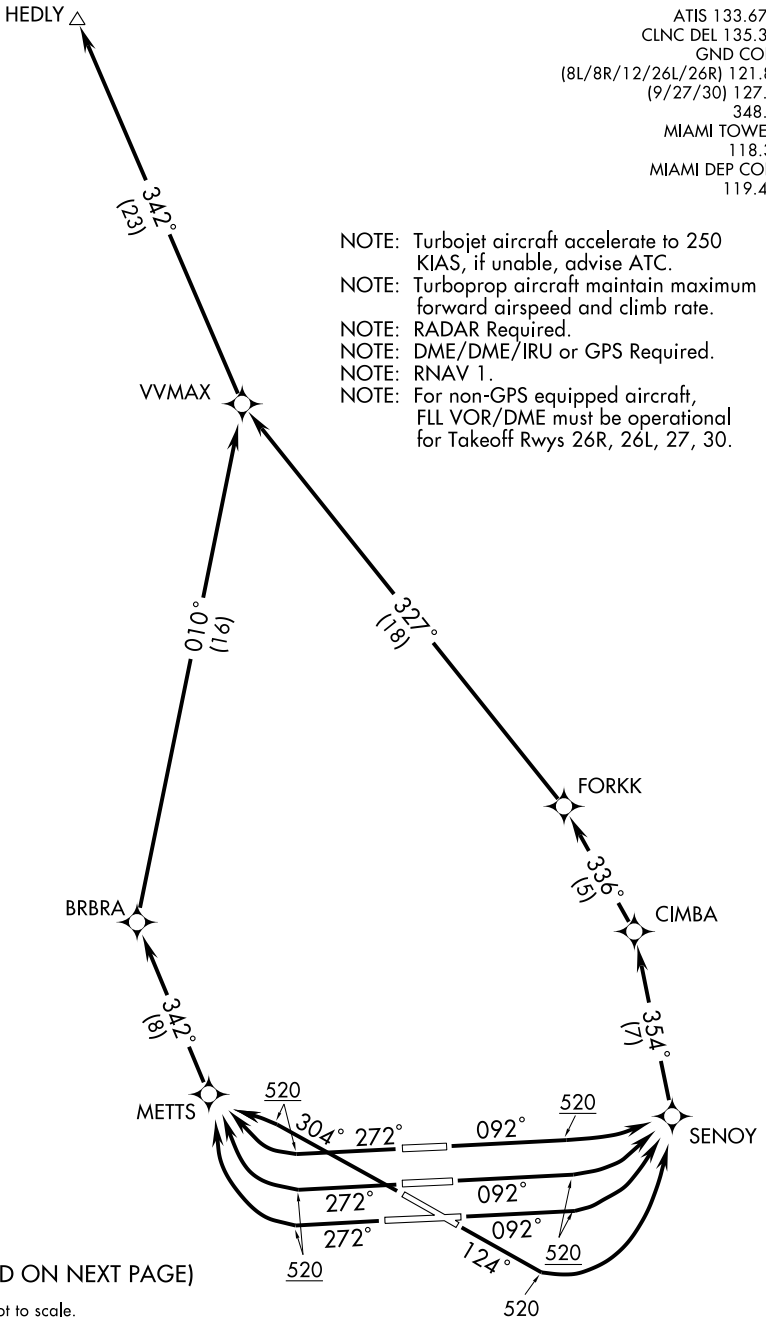
SE-3, 15 DEC 2011 to 12 JAN 2012

(HEDLY1.HEDLY) 09183 SL-257 (FAA)
HEDLY ONE DEPARTURE (RNAV)

MIAMI INTL (MIA)
 MIAMI, FLORIDA

ATIS 133.675
 CLNC DEL 135.35
 GND CON
 (8L/8R/12/26L/26R) 121.8
 (9/27/30) 127.5
 348.6
 MIAMI TOWER
 118.3
 MIAMI DEP CON
 119.45

- NOTE: Turbojet aircraft accelerate to 250 KIAS, if unable, advise ATC.
- NOTE: Turboprop aircraft maintain maximum forward airspeed and climb rate.
- NOTE: RADAR Required.
- NOTE: DME/DME/IRU or GPS Required.
- NOTE: RNAV 1.
- NOTE: For non-GPS equipped aircraft, FLL VOR/DME must be operational for Takeoff Rwy 26R, 26L, 27, 30.



(CONTINUED ON NEXT PAGE)

NOTE: Chart not to scale.

HEDLY ONE DEPARTURE (RNAV)
 (HEDLY1.HEDLY) 09183

MIAMI, FLORIDA
MIAMI INTL (MIA)

SE-3, 15 DEC 2011 to 12 JAN 2012

SE-3, 15 DEC 2011 to 12 JAN 2012

HEDLY ONE DEPARTURE (RNAV)



DEPARTURE ROUTE DESCRIPTION

TAKE-OFF RUNWAYS 8L, 8R, 9: Climb heading 092° to 520, then left turn direct SENOY, then via depicted route to HEDLY, thence. . . .

TAKE-OFF RUNWAY 12: Climb heading 124° to 520, then left turn direct SENOY, then via depicted route to HEDLY, thence. . . .

TAKE-OFF RUNWAYS 26R, 26L, 27: Climb heading 272° to 520, then right turn direct METTS, then via depicted route to HEDLY, thence. . . .

TAKE-OFF RUNWAY 30: Climb heading 304° to 520, then left turn direct METTS, then via depicted route to HEDLY, thence. . . .

. . . . Maintain 5000 or ATC assigned altitude. Expect further clearance to filed altitude within 10 minutes after departure.

TAKE-OFF MINIMUMS:

Rwy 8L: 300-1¼ or Standard with minimum obstacle climb of 382 feet per NM to 300, minimum ATC climb of 500 feet per NM to 520.

Rwys 8R, 9: Standard with minimum ATC climb of 500 feet per NM to 520.

Rwy 12: Standard with minimum obstacle climb of 229 feet per NM to 1200, minimum ATC climb of 500 feet per NM to 520.

Rwys 26R, 26L, 27, 30: Standard with minimum ATC climb of 300 feet per NM to 520.

TAKE-OFF OBSTACLES:

NOTE: Rwy 8L, Bldg 3391' from DER, 1024' left of centerline, 160' AGL/172' MSL. Glideslope Antenna 804' from DER, 501' right of centerline, 32' AGL/46' MSL. Multiple Towers and Bldgs beginning 1350' from DER, 691' left of centerline, up to 150' AGL/164' MSL.

NOTE: Rwy 8R, Tree 4064' from DER, 959' right of centerline, 98' AGL/112' MSL. Antenna and Multiple Trees beginning 2719' from DER, 194' left of centerline, up to 85' AGL/98' MSL.

NOTE: Rwy 9, Light 1232' from DER, 785' left of centerline, 39' AGL/48' MSL. Windsock 22' from DER, 438' right of centerline, 21' AGL/30' MSL.

NOTE: Rwy 12, Railroad beginning 4' from DER, 356' right of centerline, 23' AGL/28' MSL. Building and Tree beginning 1064' from DER, 118' right of centerline, up to 94' AGL/108' MSL.

Windsock 681' from DER, 345' left of centerline, 21' AGL/30' MSL.

NOTE: Rwy 26R, Tower, Building, Multiple Light Poles and Trees beginning 741' from DER, 1' right of centerline, up to 66' AGL/80' MSL. Pole, Bldg, and Tower beginning 255' from DER, 5' left of centerline, up to 34' AGL/48' MSL.

NOTE: Rwy 26L, Tower and Multiple Trees beginning 1306' from DER, 638' right of centerline, up to 63' AGL/77' MSL. Tree and Light Pole beginning 1773' from DER, 568' left of centerline, up to 61' AGL/75' MSL.

NOTE: Rwy 27, Railroad, Tree, and Multiple Light Poles beginning 750' from DER, 94' left of centerline, up to 62' AGL/76' MSL.

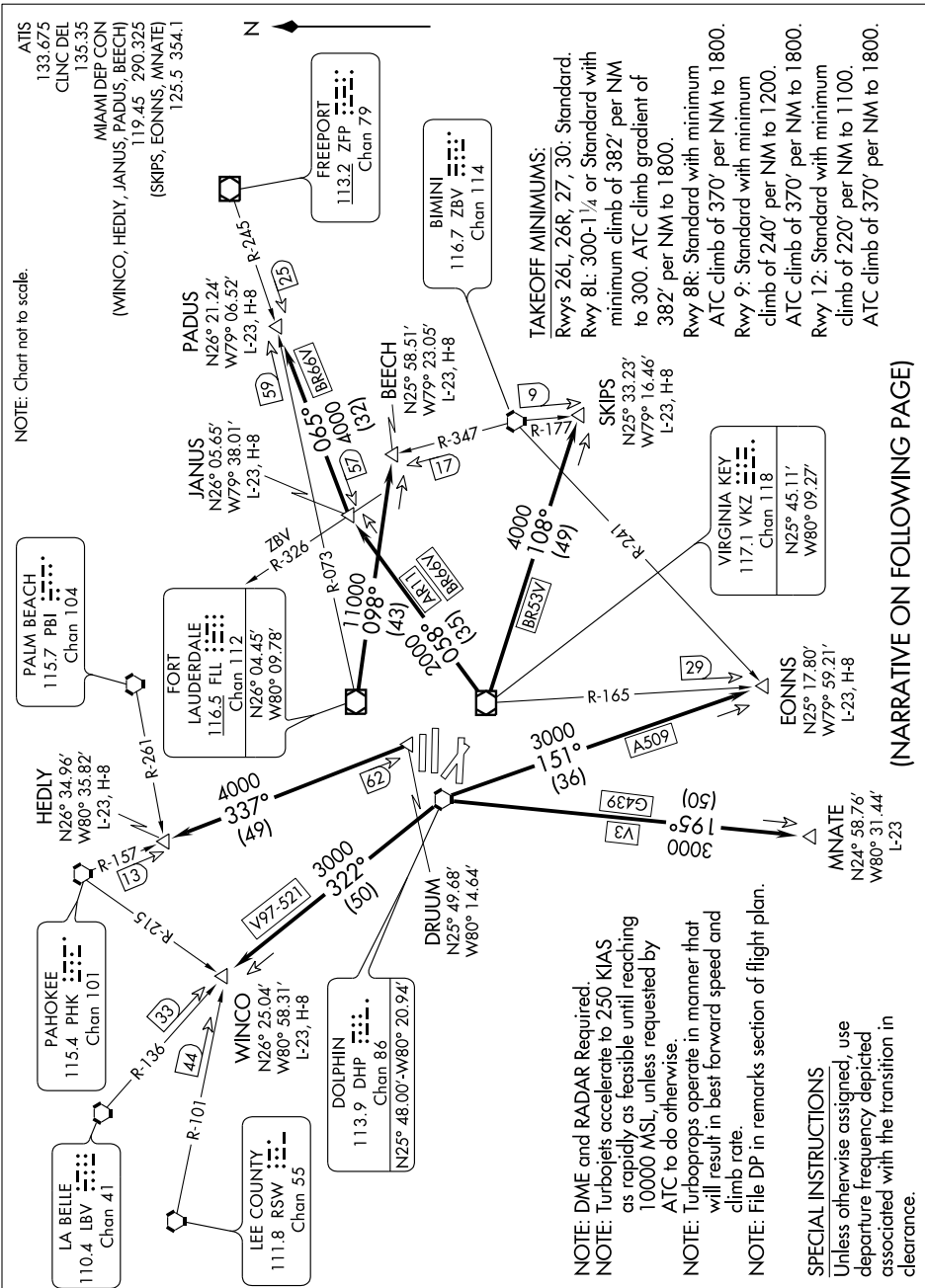
NOTE: Rwy 30, Pole, Multiple Towers and Trees beginning 1414' from DER, 189' right of centerline, up to 120' AGL/125' MSL. Tree 2058' from DER, 785' left of centerline, 52' AGL/66' MSL.

SE-3, 15 DEC 2011 to 12 JAN 2012

SE-3, 15 DEC 2011 to 12 JAN 2012

MIAMI ONE DEPARTURE

SE-3, 15 DEC 2011 to 12 JAN 2012



(NARRATIVE ON FOLLOWING PAGE)

SE-3, 15 DEC 2011 to 12 JAN 2012

MIAMI ONE DEPARTURE

MIAMI ONE DEPARTURE



DEPARTURE ROUTE DESCRIPTION

TAKEOFF ALL RWYS: Climb on heading as assigned by ATC. . . .

. . . . Maintain 5000' or assigned lower altitude and expect radar vectors to appropriate transition. Expect clearance to filed altitude ten minutes after departure.

NOTE: Rwy 26L/26R, If assigned left turn climb heading 272° to 600 before turning left.

NOTE: Rwy 30, If assigned left turn climb heading 304° to 600 before turning left.

NOTE: Rwy 27, If assigned right turn climb heading 272° to 600 before turning right.

NOTE: Rwy 8L/8R, If assigned a right turn climb heading 092° to 1000 before turning right.

NOTE: Rwy 12, If assigned a left turn heading 124° to 1100 before turning left.

BEECH TRANSITION (MIA1.BEECH): From over FLL VOR/DME via FLL R-098 to BEECH INT. Thence as filed.

EONNS TRANSITION (MIA1.EONNS): From over DHP VORTAC via DHP R-151 to EONNS INT. Thence as filed.

HEDLY TRANSITION (MIA1.HEDLY): From over DRUUM DME FIX via PHK R-157 to HEDLY INT. Thence as filed.

JANUS TRANSITION (MIA1.JANUS): From over VKZ VOR/DME via VKZ R-058 to JANUS INT. Thence as filed.

MNATE TRANSITION (MIA1.MNATE): From over DHP VORTAC via R-195 to MNATE DME FIX. Thence as filed.

PADUS TRANSITION (MIA1.PADUS): From over VKZ VOR/DME via VKZ R-058 to JANUS INT and ZFP R-245 to PADUS INT. Thence as filed.

SKIPS TRANSITION (MIA1.SKIPS): From over VKZ VOR/DME via VKZ R-108 to SKIPS INT. Thence as filed.

WINCO TRANSITION (MIA1.WINCO): From over DHP VORTAC via DHP R-322 to WINCO INT. Thence as filed.

(CONTINUED ON FOLLOWING PAGE)

SE-3, 15 DEC 2011 to 12 JAN 2012

SE-3, 15 DEC 2011 to 12 JAN 2012

MIAMI ONE DEPARTURE

TAKEOFF OBSTACLE NOTES:

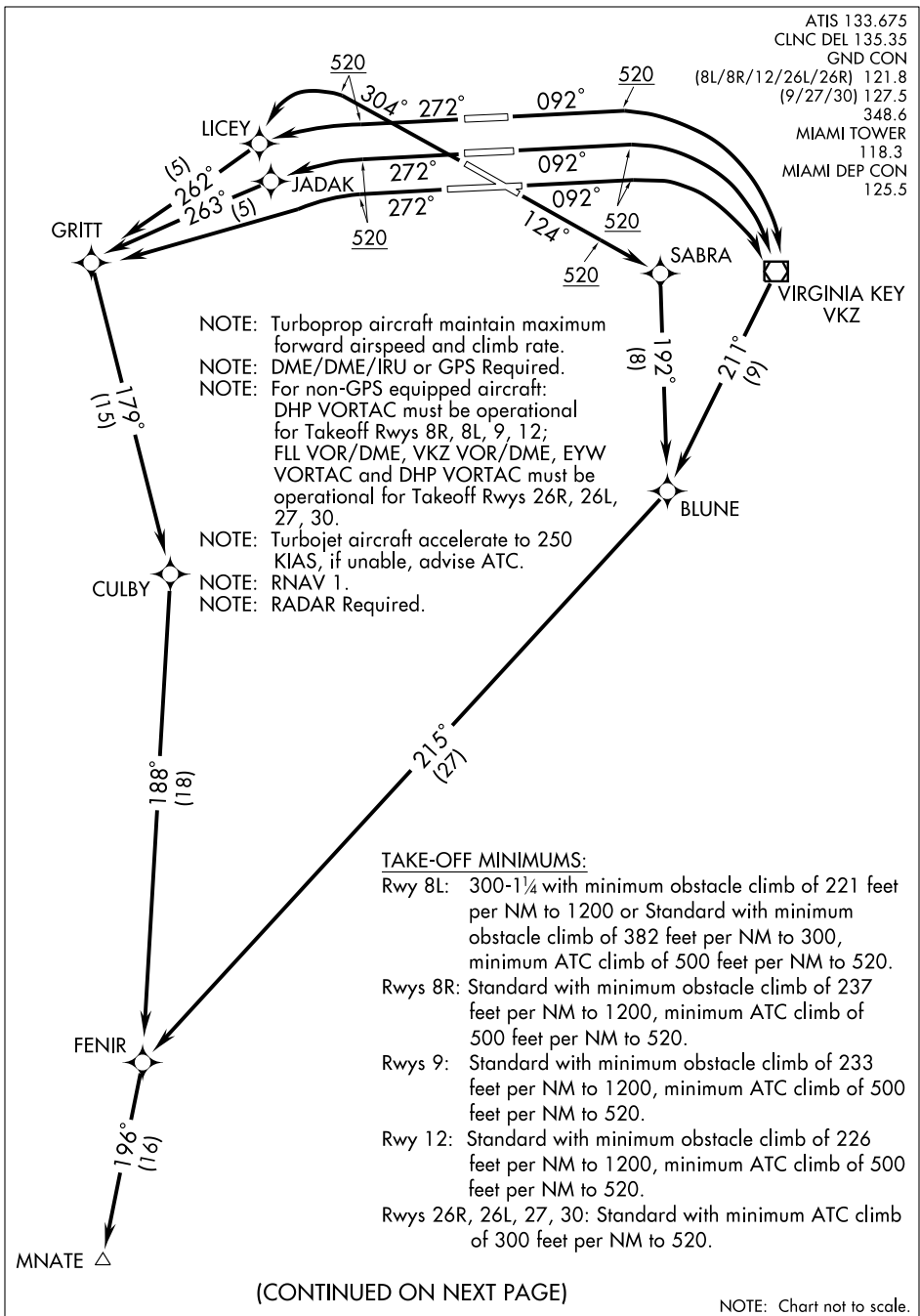
- Rwy 8L: Multiple buildings with antennas and towers beginning 1350' from DER, 690' left of centerline, up to 160' AGL/172' MSL.
- Rwy 8R: Tree 4064' from DER, 958' right of centerline, 93' AGL/112' MSL. Multiple power lines, antennas and trees beginning 1856' from DER, 238' left of centerline, up to 150' AGL/153' MSL. Navaid and rod on OL GS 804' from DER, 500' right of centerline, 46' MSL.
- Rwy 9: Light windsock 21' from DER, 437' right of centerline, 21' AGL/30' MSL. Pole 702' from DER, 600' right of centerline, 21' AGL/38' MSL. Antenna 4035' from DER, 1528' right of centerline, 108' AGL/125' MSL. Electrical system 1231' from DER, 785' left of centerline, 32' AGL/48' MSL.
- Rwy 12: Train 3' from DER, 436' right of runway, 23' AGL/51' MSL. Antenna 2917' from DER, 1140' right of centerline, 89' AGL/106' MSL. Antenna on building 3164' from DER, 992' right of centerline, 91' AGL/108' MSL. Trees beginning 114' from DER, 117' right of centerline, up to 20' AGL/37' MSL. Sign 1191' from DER, 438' right of centerline, 32' AGL/49' MSL. Windsock 680' from DER, 345' left of centerline, 16' AGL/30' MSL.
- Rwy 26L: Pole 1080' from DER, 680' left of centerline, 33' AGL/47' MSL. Light pole 1773' from DER, 825' left of centerline, 34' AGL/53' MSL. Tree 1405' from DER, 848' left of centerline, 30' AGL/44' MSL. Rod on tower 1305' from DER, 638' right of centerline, 34' AGL/48' MSL. Tree 2459' from DER, 1070' right of centerline, 63' AGL/71' MSL.
- Rwy 26R: Numerous poles beginning 1090' from DER, 36' right of centerline, up to 44' AGL/59' MSL. Building 740' from DER, 511' right of centerline, 14' AGL/28' MSL. Trees beginning 1047' from DER, 272' right of centerline, up to 66' AGL/80' MSL. Tree 888' from DER, on centerline, 21' AGL/35' MSL. Rod on tower 1304' from DER, 160' left of centerline, 34' AGL/48' MSL.
- Rwy 27: Numerous poles and light poles beginning 2056' from DER, 93' left of centerline up to 62' AGL/76' MSL. Train on tracks 750' from DER, 576' left of centerline, 23' AGL/53' MSL. Sign 2005' from DER, 386' left of centerline, 44' AGL/58' MSL. Tree 1067' from DER, 680' left of centerline, 23' AGL/37' MSL. Pole 2056' from DER, 95' right of centerline, 46' AGL/60' MSL. Pole 2067' from DER, 273' right of centerline, 46' AGL/60' MSL.
- Rwy 30: Pole 560' from DER, 563' left of centerline, 33' AGL/47' MSL. Rod on tower 2451' from DER, 434' right of centerline, 34' AGL/48' MSL. Antenna on tower 1733' from DER, 911' right of centerline, 41' AGL/55' MSL. Antenna on tower 4427' from DER, 1451' right of centerline, 109' AGL/123' MSL. Trees beginning 2658' from DER, 188' right of centerline, up to 63' AGL/77' MSL.

SE-3, 15 DEC 2011 to 12 JAN 2012

SE-3, 15 DEC 2011 to 12 JAN 2012

MNATE ONE DEPARTURE (RNAV)

ATIS 133.675
 CLNC DEL 135.35
 GND CON
 (8L/8R/12/26L/26R) 121.8
 (9/27/30) 127.5
 348.6
 MIAMI TOWER
 118.3
 MIAMI DEP CON
 125.5



SE-3, 15 DEC 2011 to 12 JAN 2012

SE-3, 15 DEC 2011 to 12 JAN 2012

NOTE: Chart not to scale.

MNATE ONE DEPARTURE (RNAV)

MNATE ONE DEPARTURE (RNAV)



DEPARTURE ROUTE DESCRIPTION

TAKE-OFF RUNWAY 8L, 8R, 9: Climb heading 092° to 520', then right turn direct VKZ VOR/DME, then via depicted route to MNATE, thence. . . .

TAKE-OFF RUNWAY 12: Climb heading 124° to 520', then direct SABRA, then via depicted route to MNATE, thence. . . .

TAKE-OFF RUNWAY 26R: Climb heading 272° to 520', then direct LICEY, then via depicted route to MNATE, thence. . . .

TAKE-OFF RUNWAY 26L: Climb heading 272° to 520', then left turn direct JADAK, then via depicted route to MNATE, thence. . . .

TAKE-OFF RUNWAY 27: Climb heading 272° to 520', then left turn direct GRITT, then via depicted route to MNATE, thence. . . .

TAKE-OFF RUNWAY 30: Climb heading 304° to 520', then left turn direct LICEY, then via depicted route to MNATE, thence. . . .

. . . . Maintain 5000 or ATC assigned altitude. Expect further clearance to filed altitude within 10 minutes after departure.

TAKE-OFF OBSTACLES:

NOTE: Rwy 8L, Bldg 3391' from DER, 1024' left of centerline, 160' AGL/172' MSL. Glideslope antenna 804' from DER, 501' right of centerline, 32' AGL/46' MSL. Multiple towers and bldgs beginning 1350' from DER, 691' left of centerline, up to 150' AGL/164' MSL.

NOTE: Rwy 8R, Tree 4064' from DER, 959' right of centerline, 98' AGL/112' MSL. Antenna and multiple trees beginning 2719' from DER, 194' left of centerline, up to 85' AGL/98' MSL.

NOTE: Rwy 9, Light 1232' from DER, 785' left of centerline, 39' AGL/48' MSL. Windsock 22' from DER, 438' right of centerline, 21' AGL/30' MSL.

NOTE: Rwy 12, Railroad beginning 4' from DER, 356' right of centerline, 23' AGL/28' MSL. Building and tree beginning 1064' from DER, 118' right of centerline, up to 94' AGL/108' MSL. Windsock 681' from DER, 345' left of centerline, 21' AGL/30' MSL.

NOTE: Rwy 26R, Tower, building, multiple light poles and trees beginning 741' from DER, 1' right of centerline, up to 66' AGL/80' MSL. Pole, bldg, and tower beginning 255' from DER, 5' left of centerline, up to 34' AGL/48' MSL.

NOTE: Rwy 26L, Tower and multiple trees beginning 1306' from DER, 638' right of centerline, up to 63' AGL/77' MSL. Tree and light pole beginning 1773' from DER, 568' left of centerline, up to 61' AGL/75' MSL.

NOTE: Rwy 27, Railroad, tree, and multiple light poles beginning 750' from DER, 94' left of centerline, up to 62' AGL/76' MSL.

NOTE: Rwy 30, Pole, multiple towers and trees beginning 1414' from DER, 189' right of centerline, up to 120' AGL/125' MSL. Tree 2058' from DER, 785' left of centerline, 52' AGL/66' MSL.

SE-3, 15 DEC 2011 to 12 JAN 2012

SE-3, 15 DEC 2011 to 12 JAN 2012

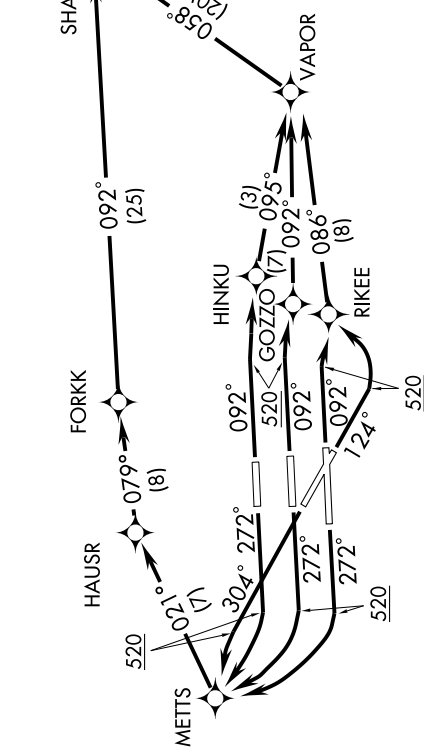
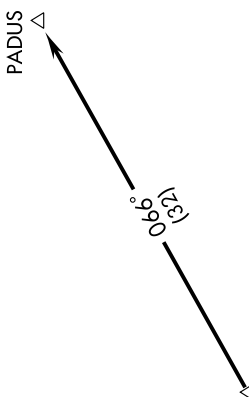
PADUS ONE DEPARTURE (RNAV)

SE-3, 15 DEC 2011 to 12 JAN 2012

ATIS 133.675
 CLNC DEL 135.35
 GND CON
 121.8 (8L/8R/12/26L/26R)
 127.5 (9/27/30)
 348.6
 MIAMI TOWER
 118.3
 MIAMI DEP CON
 119.45

TAKE-OFF MINIMUMS:

- Rwy 8L: 300-1/4 or Standard with minimum obstacle climb of 382' per NM to 300', minimum ATC climb of 500' per NM to 520'.
- Rwy 8R: Standard with minimum ATC climb of 500' per NM to 520'.
- Rwy 9: Standard with minimum obstacle climb of 233' per NM to 1200', minimum ATC climb of 500' per NM to 520'
- Rwy 12: Standard with minimum obstacle climb of 229' per NM to 1200', minimum ATC climb of 500' per NM to 520'.
- Rwy 26R/26L/27/30: Standard with minimum ATC climb of 300' per NM to 520'.



- NOTE: Turbojet aircraft accelerate to 250 KIAS, if unable, advise ATC.
- NOTE: Turboprop aircraft maintain maximum forward airspeed and climb rate.
- NOTE: RADAR required.
- NOTE: DME/DME/IRU or GPS required.
- NOTE: RNAV 1.

NOTE: Chart not to scale.

(CONTINUED ON NEXT PAGE)

SE-3, 15 DEC 2011 to 12 JAN 2012

PADUS ONE DEPARTURE (RNAV)

PADUS ONE DEPARTURE (RNAV)



DEPARTURE ROUTE DESCRIPTION

TAKE-OFF RUNWAY 8L: Climb heading 092° to 520', then right turn direct HINKU, then via depicted route to PADUS, thence. . . .

TAKE-OFF RUNWAY 8R: Climb heading 092° to 520', then right turn direct GOZZO, then via depicted route to PADUS, thence. . . .

TAKE-OFF RUNWAY 9: Climb heading 092° to 520', then right turn direct RIKEE, then via depicted route to PADUS, thence. . . .

TAKE-OFF RUNWAY 12: Climb heading 124° to 520', then left turn direct RIKEE, then via depicted route to PADUS, thence. . . .

TAKE-OFF RUNWAY 26L, 26R, 27: Climb heading 272° to 520', then right turn direct METTS, then via depicted route to PADUS, thence. . . .

TAKE-OFF RUNWAY 30: Climb heading 304° to 520', then left turn direct METTS, then via depicted route to PADUS, thence. . . .

. . . . Maintain 5000' or ATC assigned altitude. Expect further clearance to filed altitude within 10 minutes after departure.

TAKE-OFF OBSTACLES:

NOTE: Rwy 8L, Bldg 3391' from DER, 1024' left of centerline, 160' AGL/172' MSL. Glideslope antenna 804' from DER, 501' right of centerline, 32' AGL/46' MSL. Multiple towers and bldgs beginning 1350' from DER, 691' left of centerline, up to 150' AGL/164' MSL.

NOTE: Rwy 8R, Tree 4064' from DER, 959' right of centerline, 98' AGL/112' MSL. Antenna and multiple trees beginning 2719' from DER, 194' left of centerline, up to 85' AGL/98' MSL.

NOTE: Rwy 9, Light 1232' from DER, 785' left of centerline, 39' AGL/48' MSL. Windsock 22' from DER, 438' right of centerline, 21' AGL/30' MSL.

NOTE: Rwy 12, Railroad beginning 4' from DER, 356' right of centerline, 23' AGL/28' MSL. Building and tree beginning 1064' from DER, 118' right of centerline, up to 94' AGL/108' MSL. Windsock 681' from DER, 345' left of centerline, 21' AGL/30' MSL.

NOTE: Rwy 26R, Tower, building, multiple light poles and trees beginning 741' from DER, 1' right of centerline, up to 66' AGL/80' MSL. Pole, bldg, and tower beginning 255' from DER, 5' left of centerline, up to 34' AGL/48' MSL.

NOTE: Rwy 26L, Tower and multiple trees beginning 1306' from DER, 638' right of centerline, up to 63' AGL/77' MSL. Tree and light pole beginning 1773' from DER, 568' left of centerline, up to 61' AGL/75' MSL.

NOTE: Rwy 27, Railroad, tree, and multiple light poles beginning 750' from DER, 94' left of centerline, up to 62' AGL/76' MSL.

NOTE: Rwy 30, Pole, multiple towers and trees beginning 1414' from DER, 189' right of centerline, up to 120' AGL/125' MSL. Tree 2058' from DER, 785' left of centerline, 52' AGL/66' MSL.

SE-3, 15 DEC 2011 to 12 JAN 2012

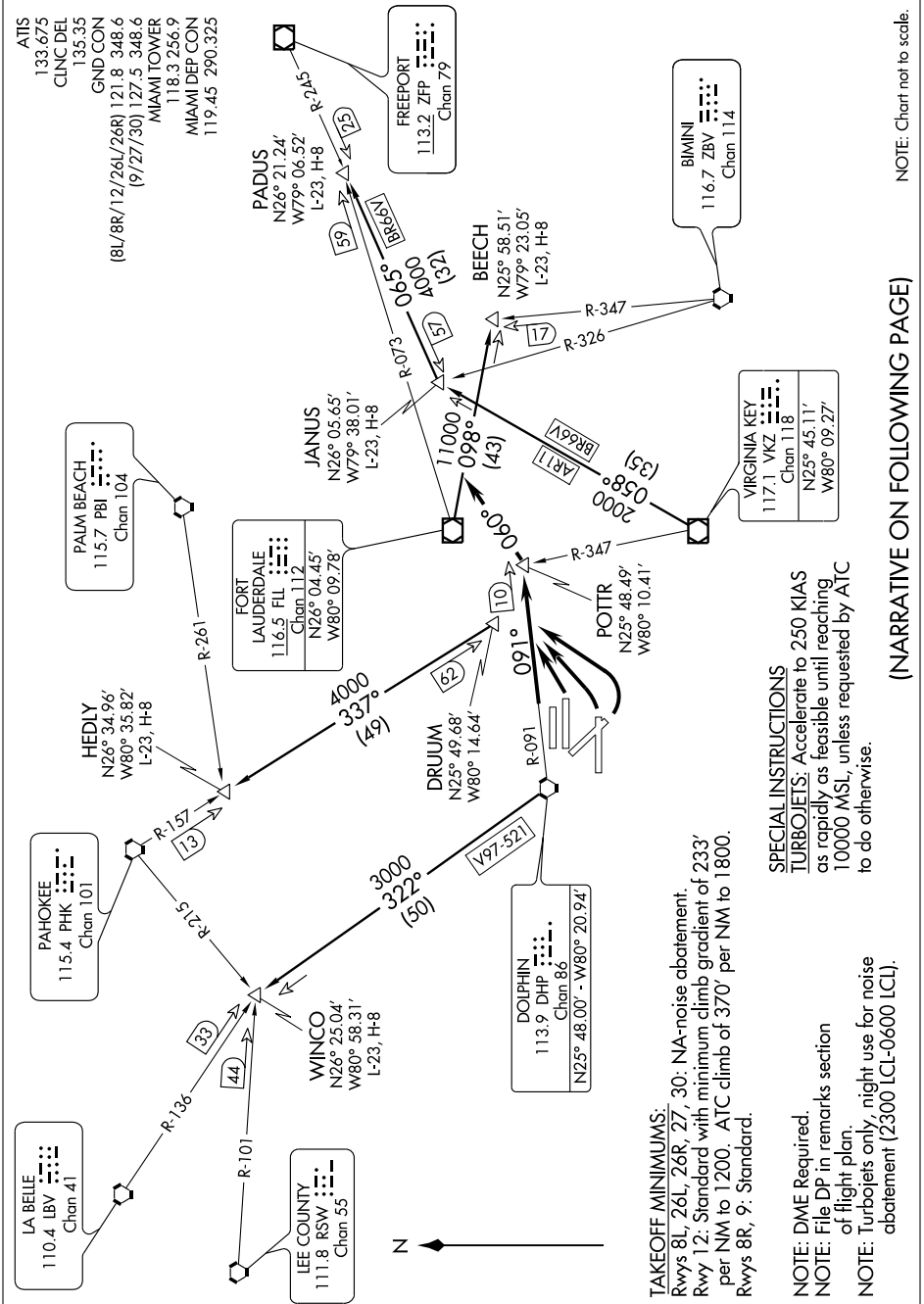
SE-3, 15 DEC 2011 to 12 JAN 2012

POTTR4.POTTR) 11013
POTTR FOUR DEPARTURE

SL-257 (FAA)

MIAMI INTL (MIA)
 MIAMI, FLORIDA

SE-3, 15 DEC 2011 to 12 JAN 2012



NOTE: Chart not to scale.

(NARRATIVE ON FOLLOWING PAGE)

SE-3, 15 DEC 2011 to 12 JAN 2012

POTTR FOUR DEPARTURE
 (POTTR4.POTTR) 11013

MIAMI, FLORIDA
 MIAMI INTL (MIA)

TAKEOFF MINIMUMS:
 Rwy 8L, 26L, 26R, 27, 30: NA-noise abatement.
 Rwy 12: Standard with minimum climb gradient of 233' per NM to 1200. ATC climb of 370' per NM to 1800.
 Rwy 8R, 9: Standard.

SPECIAL INSTRUCTIONS
TURBOJET: Accelerate to 250 KIAS as rapidly as feasible until reaching 10000 MSL, unless requested by ATC to do otherwise.

NOTE: DME Required.
NOTE: File DP in remarks section of flight plan.
NOTE: Turbojets only, night use for noise abatement (2300 LCL-0600 LCL).

POTTR FOUR DEPARTURE



DEPARTURE ROUTE DESCRIPTION

TAKEOFF RWY 8R: Intercept DHP VORTAC R-091 to POTTR INT. Thence

TAKEOFF RWYS 9, 12: Climbing left turn to intercept DHP VORTAC R-091 to POTTR INT. Thence

. . . . turn left heading 060°. Expect radar vectors to appropriate transition. All aircraft maintain 5000 or assigned lower altitude. Expect clearance to filed altitude ten (10) minutes after departure.

BEECH TRANSITION (POTTR4.BEECH): From over FLL VOR/DME via FLL R-098 to BEECH INT. Thence as filed.

HEDLY TRANSITION (POTTR4.HEDLY): From over DRUUM DME FIX via PHK VORTAC R-157 to HEDLY INT. Thence as filed.

JANUS TRANSITION (POTTR4.JANUS): From over VKZ VOR/DME via VKZ R-058 to JANUS INT. Thence as filed.

PADUS TRANSITION (POTTR4.PADUS): From over VKZ VOR/DME via VKZ R-058 to JANUS INT and ZFP VOR/DME R-245 to PADUS INT. Thence as filed.

WINCO TRANSITION (POTTR4.WINCO): From over DHP VORTAC via DHP R-322 to WINCO INT. Thence as filed.

TAKEOFF OBSTACLE NOTES:

- Rwy 8L: Multiple buildings with antennas and towers beginning 1350' from DER, 690' left of centerline, up to 160' AGL/172' MSL.
- Rwy 8R: Tree 4064' from DER, 958' right of centerline, 93' AGL/112' MSL. Antenna and trees beginning 1856' from DER, 238' left of centerline, up to 81' AGL/98' MSL.
- Rwy 9: Light windsock 21' from DER, 437' right of centerline, 21' AGL/30' MSL. Pole 702' from DER, 600' right of centerline, 21' AGL/38' MSL. Antenna 4035' from DER, 1528' right of centerline, 108' AGL/125' MSL. Electrical system 1231' from DER, 785' left of centerline, 32' AGL/48' MSL.
- Rwy 12: Train 3' from DER, 436' right of centerline, 23' AGL/51' MSL. Antenna 2917' from DER, 1140' right of centerline, 89' AGL/106' MSL. Antenna on building 3164' from DER, 992' right of centerline, 91' AGL/108' MSL. Trees beginning 114' from DER, 117' right of centerline, up to 20' AGL/37' MSL. Sign 1191' from DER, 438' right of centerline, 32' AGL/49' MSL. Windsock 680' from DER, 345' left of centerline, 16' AGL/30' MSL.

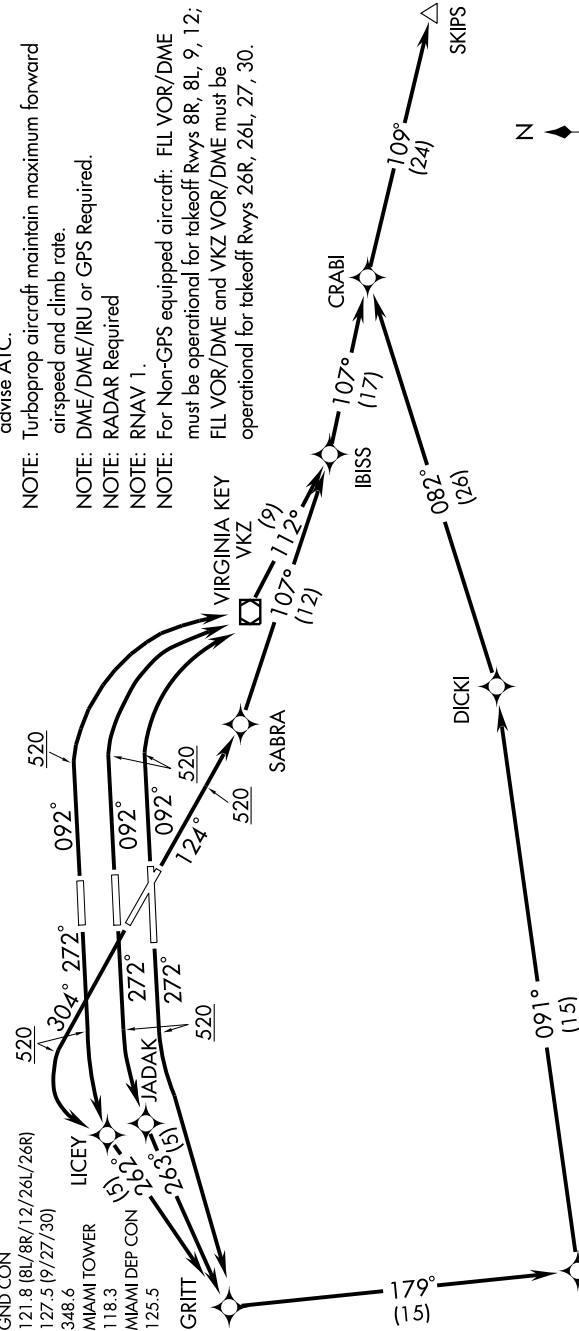
SE-3, 15 DEC 2011 to 12 JAN 2012

SE-3, 15 DEC 2011 to 12 JAN 2012

SE-3, 15 DEC 2011 to 12 JAN 2012

- NOTE: Turbojet aircraft accelerate to 250 KIAS, if unable, advise ATC.
- NOTE: Turboprop aircraft maintain maximum forward airspeed and climb rate.
- NOTE: DME/DME/IRU or GPS Required.
- NOTE: RADAR Required
- NOTE: RNAV 1.
- NOTE: For Non-GPS equipped aircraft: FLL VOR/DME must be operational for takeoff Rwy's 8R, 8L, 9, 12; FLL VOR/DME and VKZ VOR/DME must be operational for takeoff Rwy's 26R, 26L, 27, 30.

- ATIS 133.675
- CLNC DEL 135.35
- GND CON
- 121.8 (8L/8R/12/26L/26R)
- 127.5 (9/27/30)
- 348.6
- MIAMI TOWER
- 118.3
- MIAMI DEP CON
- 125.5
- GRITT
- LICEY
- JADAK
- SABRA
- VIRGINIA KEY VKZ



- TAKE-OFF MINIMUMS:**
- Rwy 8L: 300-1 1/4, with minimum obstacle climb of 221 feet per NM to 1200 or Standard with minimum obstacle climb of 382 feet per NM to 300, minimum ATC climb of 500 feet per NM to 520.
 - Rwy 8R: Standard with minimum obstacle climb of 237 feet per NM to 1200, minimum ATC climb of 500 feet per NM to 520.
 - Rwy 9: Standard with minimum obstacle climb of 233 feet per NM to 1200, minimum ATC climb of 500 feet per NM to 520.
 - Rwy 12: Standard with minimum obstacle climb of 229 feet per NM to 1200, minimum ATC climb of 500 feet per NM to 520.
 - Rwy 26R, 26L, 27, 30: Standard with minimum ATC climb of 300 feet per NM to 520.

(CONTINUED ON NEXT PAGE)

NOTE: Chart not to scale.

SE-3, 15 DEC 2011 to 12 JAN 2012



DEPARTURE ROUTE DESCRIPTION

TAKE-OFF RUNWAY 8L, 8R, 9: Climb heading 092° to 520, then right turn direct VKZ VOR/DME, then via depicted route to SKIPS, thence

TAKE-OFF RUNWAY 12: Climb heading 124° to 520, then direct SABRA, then via depicted route to SKIPS, thence

TAKE-OFF RUNWAY 26R: Climb heading 272° to 520, then left turn direct LICEY, then via depicted route to SKIPS, thence

TAKE-OFF RUNWAY 26L: Climb heading 272° to 520, then left turn direct JADAK, then via depicted route to SKIPS, thence

TAKE-OFF RUNWAY 27: Climb heading 272° to 520, then left turn direct GRITT, then left turn via track 179° to CULBY, then via depicted route to SKIPS, thence

TAKE-OFF RUNWAY 30: Climb heading 304° to 520, then left turn direct LICEY, then via depicted route to SKIPS, thence

. . . . Maintain 5000 or ATC assigned altitude. Expect further clearance to filed altitude within 10 minutes after departure.

TAKE-OFF OBSTACLES:

NOTE: Rwy 8L, Bldg 3391' from DER, 1024' left of centerline, 160' AGL/172' MSL. Glideslope Antenna 804' from DER, 501' right of centerline, 32' AGL/46' MSL. Multiple Towers and Bldgs beginning 1350' from DER, 691' left of centerline, up to 150' AGL/164' MSL.

NOTE: Rwy 8R, Tree 4064' from DER, 959' right of centerline, 98' AGL/112' MSL. Antenna and Multiple Trees beginning 2719' from DER, 194' left of centerline, up to 85' AGL/98' MSL.

NOTE: Rwy 9, Light 1232' from DER, 785' left of centerline, 39' AGL/48' MSL. Windsock 22' from DER, 438' right of centerline, 21' AGL/30' MSL.

NOTE: Rwy 12, Railroad beginning 4' from DER, 356' right of centerline, 23' AGL/28' MSL. Building and Tree beginning 1064' from DER, 118' right of centerline, up to 94' AGL/108' MSL. Windsock 681' from DER, 345' left of centerline, 21' AGL/30' MSL.

NOTE: Rwy 26R, Tower, Building, Multiple Light Poles and Trees beginning 741' from DER, 1' right of centerline, up to 66' AGL/80' MSL. Pole, Bldg, and Tower beginning 255' from DER, 5' left of centerline, up to 34' AGL/48' MSL.

NOTE: Rwy 26L, Tower and Multiple Trees beginning 1306' from DER, 638' right of centerline, up to 63' AGL/77' MSL. Tree and Light Pole beginning 1773' from DER, 568' left of centerline, up to 61' AGL/75' MSL.

NOTE: Rwy 27, Railroad, Tree, and Multiple Light Poles beginning 750' from DER, 94' left of centerline, up to 62' AGL/76' MSL.

NOTE: Rwy 30, Pole, Multiple Towers and Trees beginning 1414' from DER, 189' right of centerline, up to 120' AGL/125' MSL. Tree 2058' from DER, 785' left of centerline, 52' AGL/66' MSL.

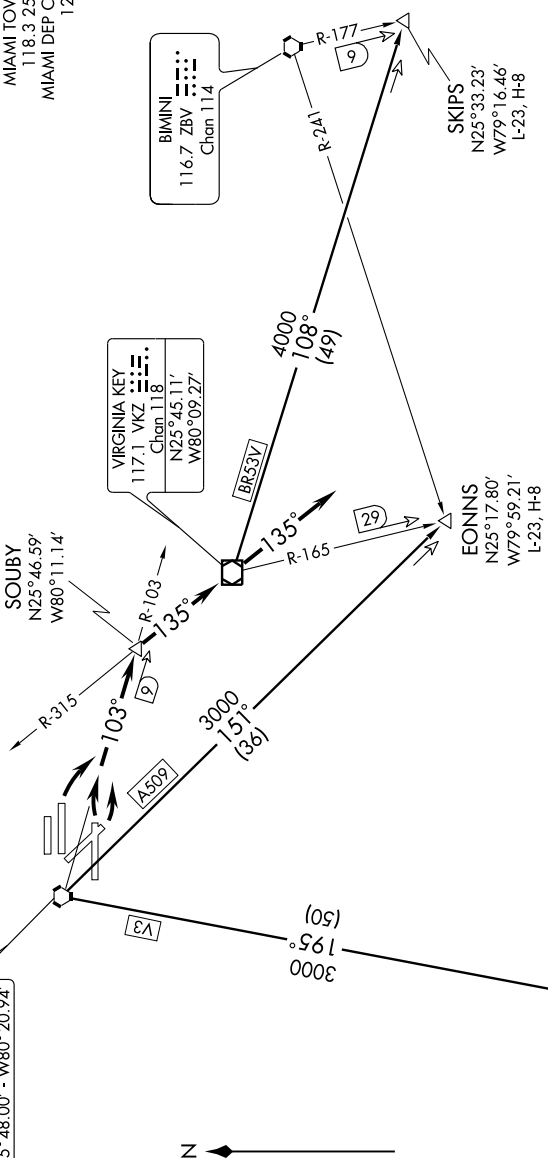
SOUBY FOUR DEPARTURE

SE-3, 15 DEC 2011 to 12 JAN 2012

(NARRATIVE ON FOLLOWING PAGE)

ATIS 133.675
 CLNC DEL 135.35
 GND CON
 (8L/8R/12/26L/26R) 121.8
 (9/27/30) 127.5
 348.6
 MIAMI TOWER
 118.3 256.9
 MIAMI DEP CON
 125.5

DOLPHIN
 113.9 DHP
 Chan 86
 N25°48.00' - W80°20.94'



VIRGINIA KEY
 117.1 VKZ
 Chan 118
 N25°45.11'
 W80°09.27'

BIMINI
 116.7 ZBV
 Chan 114

SKIPS
 N25°33.23'
 W79°16.46'
 L-23, H-8

EONINS
 N25°17.80'
 W79°59.21'
 L-23, H-8

NOTE: Unless otherwise instructed, continue heading 135° after VKZ VOR/DME until ATC issues vectors to appropriate transition.

NOTE: Turbojets Only, night use for noise abatement (2300 LCL - 0600 LCL).
 NOTE: File DP in remarks section of flight plan.
 NOTE: DME Required.
 NOTE: Chart not to scale.

SPECIAL INSTRUCTIONS
 TURBOJETS: Accelerate to 250 KIAS as rapidly as feasible until reaching 10,000' MSL, unless requested by ATC to do otherwise.

TAKE-OFF MINIMUMS:
 Rwy 8R, 9, 12: Standard with minimum climb of 370' per NM to 1800'.
 Rwy 26L, 27, 30 not authorized -NOISE ABATEMENT.

SOUBY FOUR DEPARTURE



DEPARTURE ROUTE DESCRIPTION

TAKE-OFF RUNWAYS 8R and 9: Turn right. Thence....

TAKE-OFF RUNWAY 12: Turn left. Thence....

....intercept DHP R-103 to SOUBY INT/DHP 9 DME, then turn right via VKZ R-315 to VKZ VOR/DME. Thence via heading 135°. Expect radar vectors to appropriate transition. All aircraft maintain 5000' or assigned lower altitude. Expect further clearance to filed altitude ten minutes after departure. Unless otherwise assigned, departure frequency for SKIPS, EONNS, and MNATE transitions use 125.5.

EONNS TRANSITION (SOUBY4.EONNS): Intercept the DHP VORTAC R-151 to EONNS INT. Thence as filed.

MNATE TRANSITION (SOUBY4.MNATE): Intercept the DHP VORTAC R-195 to MNATE DME FIX. Thence as filed.

SKIPS TRANSITION (SOUBY4.SKIPS): Intercept the VKZ VOR/DME R-108 to SKIPS INT. Thence as filed.

SE-3, 15 DEC 2011 to 12 JAN 2012

SE-3, 15 DEC 2011 to 12 JAN 2012

SE-3, 15 DEC 2011 to 12 JAN 2012

ATIS 133.675
CLNC DEL 135.35
GND CON
121.8 (8L/8R/12/26L/26R)
127.5 (9/27/30)
348.6
MIAMI TOWER
118.3
MIAMI DEP CON
119.45

TAKE-OFF MINIMUMS:

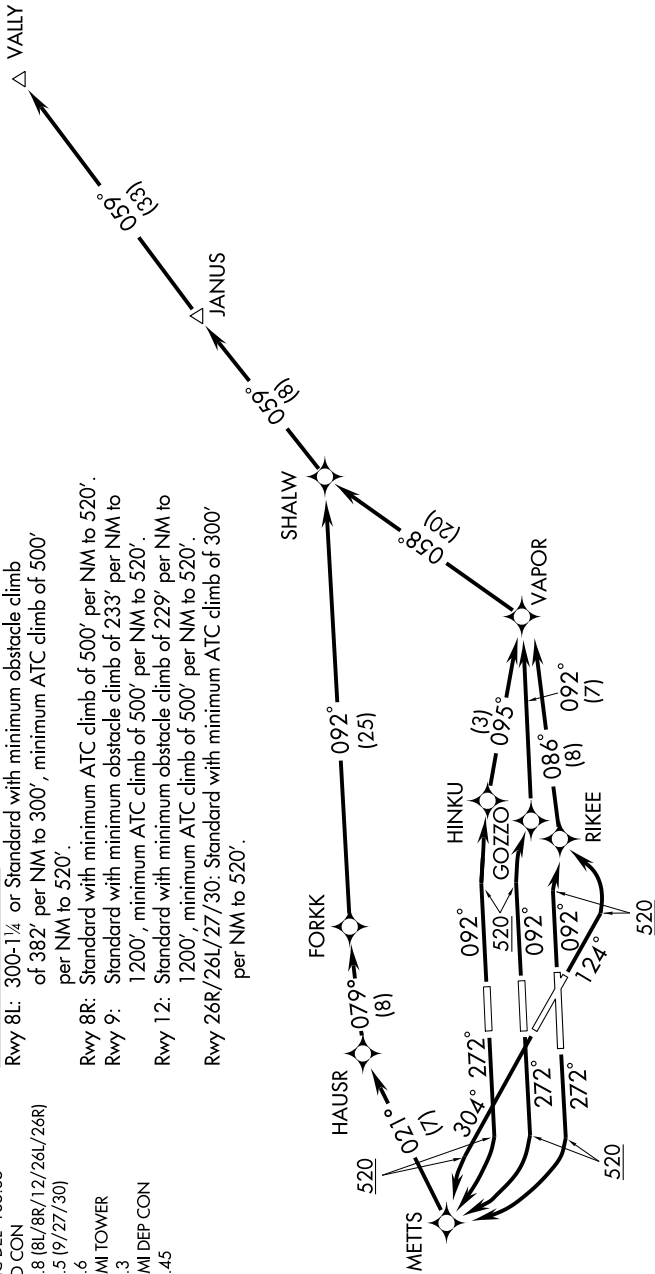
Rwy 8L: 300-1/4 or Standard with minimum obstacle climb of 382' per NM to 300', minimum ATC climb of 500' per NM to 520'.

Rwy 8R: Standard with minimum ATC climb of 500' per NM to 520'.

Rwy 9: Standard with minimum obstacle climb of 233' per NM to 1200', minimum ATC climb of 500' per NM to 520'.

Rwy 12: Standard with minimum obstacle climb of 229' per NM to 1200', minimum ATC climb of 500' per NM to 520'.

Rwy 26R/26L/27/30: Standard with minimum ATC climb of 300' per NM to 520'.



- NOTE: Turbojet aircraft accelerate to 250 KIAS, if unable, advise ATC.
- NOTE: Turboprop aircraft maintain maximum forward airspeed and climb rate.
- NOTE: DME/DME/IRU or GPS Required.
- NOTE: RADAR Required
- NOTE: RNAV 1.

(CONTINUED ON NEXT PAGE)

NOTE: Chart not to scale.



DEPARTURE ROUTE DESCRIPTION

TAKE-OFF RUNWAY 8L: Climb heading 092° to 520, then right turn direct HINKU, then via depicted route to VALLY, thence

TAKE-OFF RUNWAY 8R: Climb heading 092° to 520, then right turn direct GOZZO, then via depicted route to VALLY, thence

TAKE-OFF RUNWAY 9: Climb heading 092° to 520, then right turn direct RIKEE, then via depicted route to VALLY, thence

TAKE-OFF RUNWAY 12: Climb heading 124° to 520, then left turn direct RIKEE, then via depicted route to VALLY, thence

TAKE-OFF RUNWAY 26R, 26L, 27: Climb heading 272° to 520, then right turn direct METTS, then via depicted route to VALLY, thence

TAKE-OFF RUNWAY 30: Climb heading 304° to 520, then left turn direct METTS, then via depicted route to VALLY, thence

. . . . Maintain 5000 or ATC assigned altitude. Expect further clearance to filed altitude within 10 minutes after departure.

TAKE-OFF OBSTACLES:

- NOTE: Rwy 8L, Bldg 3391' from DER, 1024' left of centerline, 160' AGL/172' MSL. Glideslope Antenna 804' from DER, 501' right of centerline, 32' AGL/46' MSL. Multiple Towers and Bldgs beginning 1350' from DER, 691' left of centerline, up to 150' AGL/164' MSL.
- NOTE: Rwy 8R, Tree 4064' from DER, 959' right of centerline, 98' AGL/112' MSL. Antenna and Multiple Trees beginning 2719' from DER, 194' left of centerline, up to 85' AGL/98' MSL.
- NOTE: Rwy 9, Light 1232' from DER, 785' left of centerline, 39' AGL/48' MSL. Windsock 22' from DER, 438' right of centerline, 21' AGL/30' MSL.
- NOTE: Rwy 12, Railroad beginning 4' from DER, 356' right of centerline, 23' AGL/28' MSL. Building and Tree beginning 1064' from DER, 118' right of centerline, up to 94' AGL/108' MSL. Windsock 681' from DER, 345' left of centerline, 21' AGL/30' MSL.
- NOTE: Rwy 26R, Tower, Building, Multiple Light Poles and Trees beginning 741' from DER, 1' right of centerline, up to 66' AGL/80' MSL. Pole, Bldg, and Tower beginning 255' from DER, 5' left of centerline, up to 34' AGL/48' MSL.
- NOTE: Rwy 26L, Tower and Multiple Trees beginning 1306' from DER, 638' right of centerline, up to 63' AGL/77' MSL. Tree and Light Pole beginning 1773' from DER, 568' left of centerline, up to 61' AGL/75' MSL.
- NOTE: Rwy 27, Railroad, Tree, and Multiple Light Poles beginning 750' from DER, 94' left of centerline, up to 62' AGL/76' MSL.
- NOTE: Rwy 30, Pole, Multiple Towers and Trees beginning 1414' from DER, 189' right of centerline, up to 120' AGL/125' MSL. Tree 2058' from DER, 785' left of centerline, 52' AGL/66' MSL.

SE-3, 15 DEC 2011 to 12 JAN 2012

SE-3, 15 DEC 2011 to 12 JAN 2012

WINCO ONE DEPARTURE (RNAV)

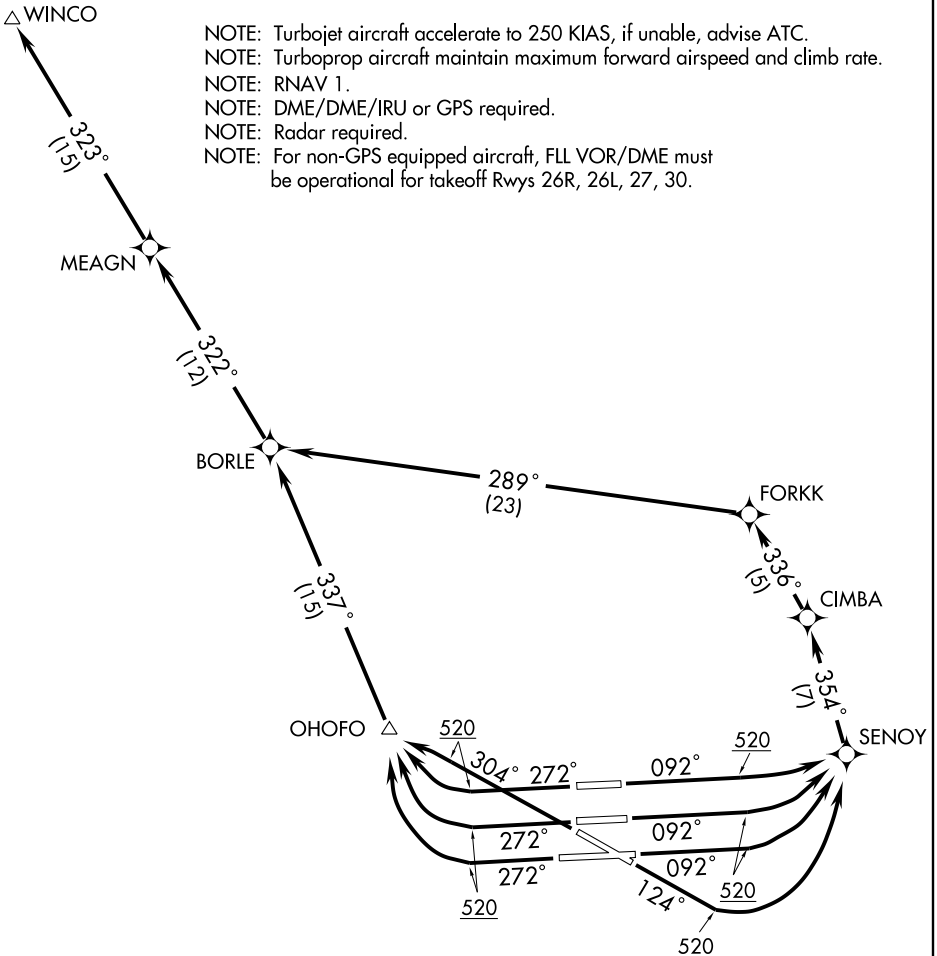
ATIS 133.675
 CLNC DEL 135.35
 GND CON
 121.8 (8L/8R/12/26L/26R)
 127.5 (9/27/30)
 348.6
 MIAMI TOWER
 118.3
 MIAMI DEP CON
 119.45 290.325

TAKEOFF MINIMUMS:

Rwy 8L: 300-1¼ or Standard with minimum obstacle climb of 382 feet per NM to 300, minimum ATC climb of 500 feet per NM to 520.
 Rws 8R, 9: Standard with minimum ATC climb of 500 feet per NM to 520.
 Rwy 12: Standard with minimum obstacle climb of 229 feet per NM to 1200, minimum ATC climb of 500 feet per NM to 520.
 Rws 26R, 26L, 27, 30: Standard with minimum ATC climb of 300 feet per NM to 520.

- NOTE: Turbojet aircraft accelerate to 250 KIAS, if unable, advise ATC.
 NOTE: Turboprop aircraft maintain maximum forward airspeed and climb rate.
 NOTE: RNAV 1.
 NOTE: DME/DME/IRU or GPS required.
 NOTE: Radar required.
 NOTE: For non-GPS equipped aircraft, FLL VOR/DME must be operational for takeoff Rws 26R, 26L, 27, 30.

SE-3, 15 DEC 2011 to 12 JAN 2012



SE-3, 15 DEC 2011 to 12 JAN 2012

(CONTINUED ON NEXT PAGE)

NOTE: Chart not to scale.

WINCO ONE DEPARTURE (RNAV)



DEPARTURE ROUTE DESCRIPTION

TAKE-OFF RUNWAYS 8L, 8R, 9: Climb heading 092° to 520, then left turn direct SENOY, then via depicted route to WINCO, thence. . . .

TAKE-OFF RUNWAY 12: Climb heading 124° to 520, then left turn direct SENOY, then via depicted route to WINCO, thence. . . .

TAKE-OFF RUNWAYS 26R, 26L, 27: Climb heading 272° to 520, then right turn direct OHOF0, then via depicted route to WINCO, thence. . . .

TAKE-OFF RUNWAY 30: Climb heading 304° to 520, then left turn direct OHOF0, then via depicted route to WINCO, thence. . . .

. . . . Maintain 5000 or ATC assigned altitude. Expect further clearance to filed altitude within 10 minutes after departure.

TAKE-OFF OBSTACLES:

NOTE: Rwy 8L, Bldg 3391' from DER, 1024' left of centerline, 160' AGL/172' MSL.
Glideslope Antenna 804' from DER, 501' right of centerline, 32' AGL/46' MSL.
Multiple Towers and Bldgs beginning 1350' from DER, 691' left of centerline, up to 150' AGL/164' MSL.

NOTE: Rwy 8R, Tree 4064' from DER, 959' right of centerline, 98' AGL/112' MSL.
Antenna and Multiple Trees beginning 2719' from DER, 194' left of centerline, up to 85' AGL/98' MSL.

NOTE: Rwy 9, Light 1232' from DER, 785' left of centerline, 39' AGL/48' MSL.
Windsock 22' from DER, 438' right of centerline, 21' AGL/30' MSL.

NOTE: Rwy 12, Railroad beginning 4' from DER, 356' right of centerline, 23' AGL/28' MSL.
Building and Tree beginning 1064' from DER, 118' right of centerline, up to 94' AGL/108' MSL. Windsock 681' from DER, 345' left of centerline, 21' AGL/30' MSL.

NOTE: Rwy 26R, Tower, Building, Multiple Light Poles and Trees beginning 741' from DER, 1' right of centerline, up to 66' AGL/80' MSL. Pole, Bldg, and Tower beginning 255' from DER, 5' left of centerline, up to 34' AGL/48' MSL.

NOTE: Rwy 26L, Tower and Multiple Trees beginning 1306' from DER, 638' right of centerline, up to 63' AGL/77' MSL. Tree and Light Pole beginning 1773' from DER, 568' left of centerline, up to 61' AGL/75' MSL.

NOTE: Rwy 27, Railroad, Tree, and Multiple Light Poles beginning 750' from DER, 94' left of centerline, up to 62' AGL/76' MSL.

NOTE: Rwy 30, Pole, Multiple Towers and Trees beginning 1414' from DER, 189' right of centerline, up to 120' AGL/125' MSL. Tree 2058' from DER, 785' left of centerline, 52' AGL/66' MSL.

SE-3, 15 DEC 2011 to 12 JAN 2012

SE-3, 15 DEC 2011 to 12 JAN 2012