

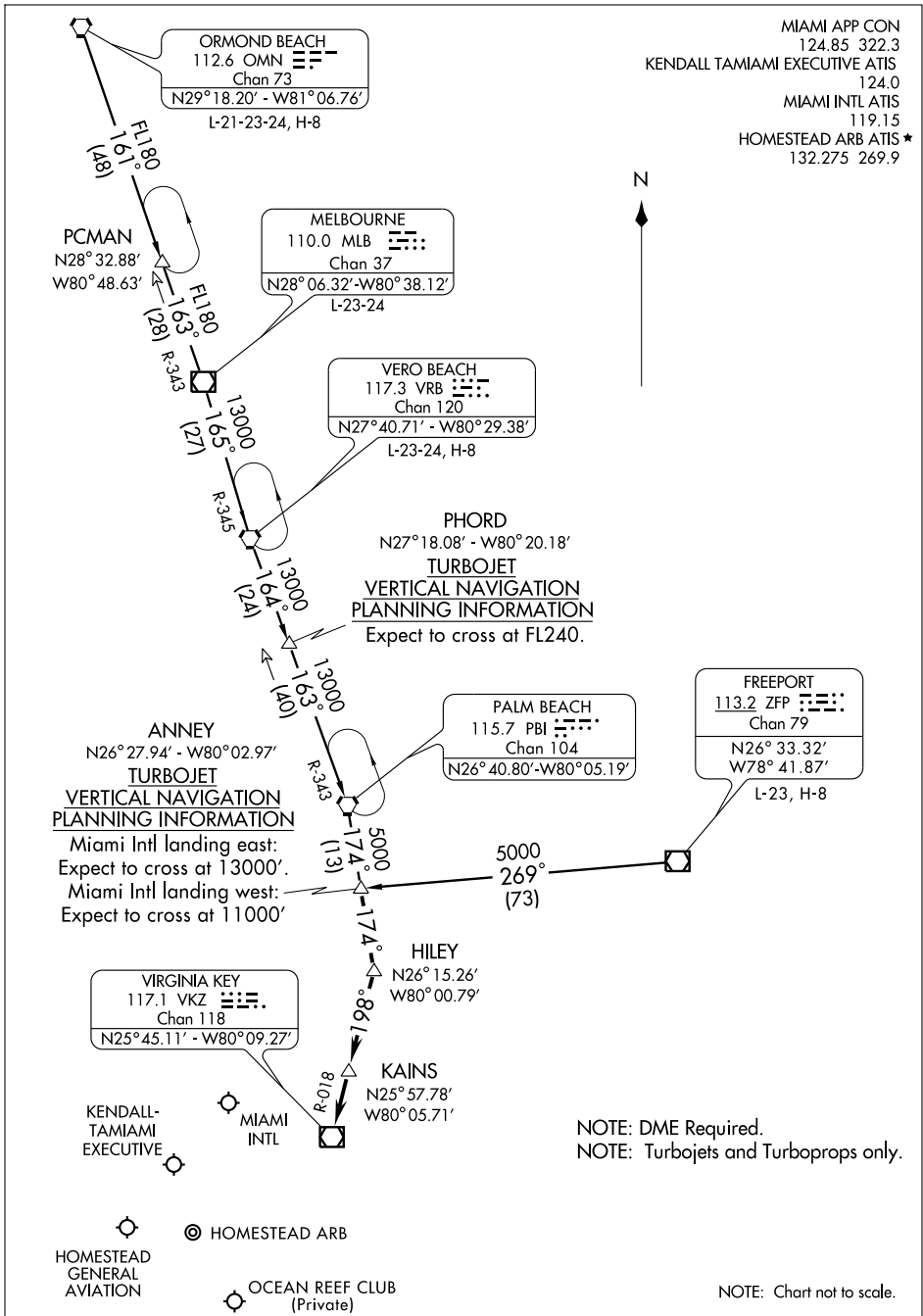
ANNEY ONE ARRIVAL

MIAMI, FLORIDA

MIAMI APP CON
124.85 322.3
KENDALL TAMiami EXECUTIVE ATIS
124.0
MIAMI INTL ATIS
119.15
HOMESTEAD ARB ATIS *
132.275 269.9

SE-3, 15 DEC 2011 to 12 JAN 2012

SE-3, 15 DEC 2011 to 12 JAN 2012



ANNEY ONE ARRIVAL

MIAMI, FLORIDA

NOTE: Chart not to scale.

ARRIVAL ROUTE DESCRIPTION

FREEPORT TRANSITION (ZFP.ANNEY1): From over ZFP VOR/DME via ZFP R-269 to ANNEY INT. Thence

MELBOURNE TRANSITION (MLB.ANNEY1): From over MLB VOR/DME via MLB R-165 to VRB VORTAC, then via VRB R-164 to PHORD INT, then via PBI R-343 to PBI VORTAC, then via PBI R-174 to ANNEY INT. Thence

ORMOND BEACH TRANSITION (OMN.ANNEY1): From over OMN VORTAC via OMN R-161 to PCMAN INT, then via MLB R-343 to MLB VORTAC then via VRB R-165 to VRB VORTAC, then via VRB R-164 to PHORD INT, then via PBI R-343 to PBI VORTAC, then via PBI R-174 to ANNEY INT. Thence

VERO BEACH TRANSITION (VRB.ANNEY1): From over VRB VORTAC via VRB R-164 to PHORD INT, then via PBI R-343 to PBI VORTAC, then via PBI R-174 to ANNEY INT. Thence

. . . From over ANNEY, then via PBI R-174 to HILEY, then via VKZ R-018 to VKZ VOR/DME. Expect radar vectors to final approach course after KAINS.

SE-3, 15 DEC 2011 to 12 JAN 2012

SE-3, 15 DEC 2011 to 12 JAN 2012

CURSO TWO ARRIVAL (RNAV) (Transition Routes)

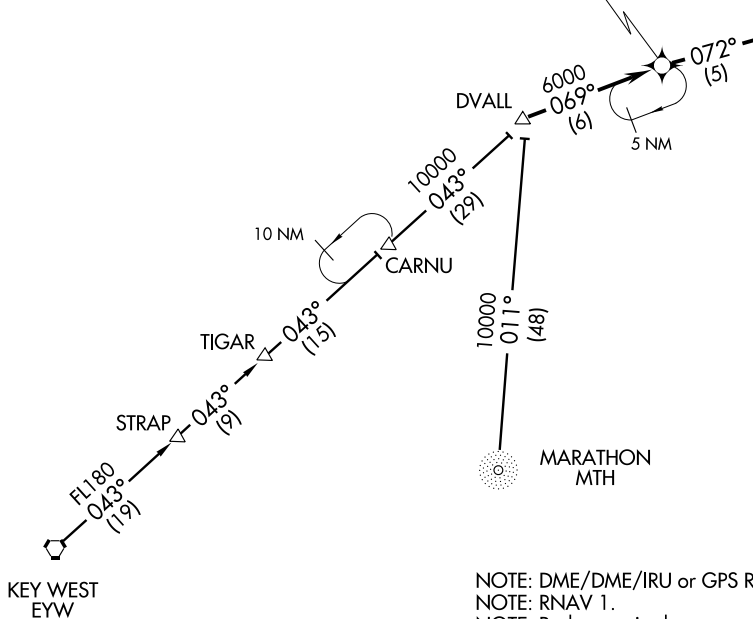
MIAMI APP CON
 124.85 322.3
 MIAMI INTL ATIS
 119.15
 FORT LAUDERDALE-HOLLYWOOD INTL ATIS
 135.0
 FORT LAUDERDALE EXECUTIVE ATIS
 119.85
 KENDALL-TAMIAMI EXECUTIVE ATIS
 124.0
 NORTH PERRY ATIS
 135.475
 OPA LOCKA EXECUTIVE ATIS
 125.9
 HOMESTEAD ARB ATIS ★
 132.275 269.9
 POMPANO BEACH AIRPARK ATIS
 120.55

KEY WEST TRANSITION (EYW.CURSO2):
MARATHON TRANSITION (MTH.CURSO2):

... From over DVALL via 069° track to CURSO,
 then via 072° track to MNNDY, thence as depicted.

CURSO
 Turbojets landing KMIA: Expect to cross at:
 Landing East: 10000 and 250 KIAS.
 Landing West: 14000 and 280 KIAS.
 Turbojets Landing KOPF: Expect to cross at 10000.
 Turbojets Landing KFLL, KFXE, KPMP:
 Expect to cross at 11000 and 250 KIAS.
 Turbojets landing KTMB, K07FA, KHST, KX51:
 Expect to cross at 10000 and 250 KIAS,
 all others cross at 6000.

See Arrival
 Routes On
 Following Page



- NOTE: DME/DME/IRU or GPS Required.
- NOTE: RNAV 1.
- NOTE: Radar required.
- NOTE: For non-GPS equipped aircraft, EYW transition: PHK DME must be operational.
- NOTE: For non-GPS equipped aircraft, MTH transition: PHK and EYW DMEs must be operational.

NOTE: Chart not to scale.

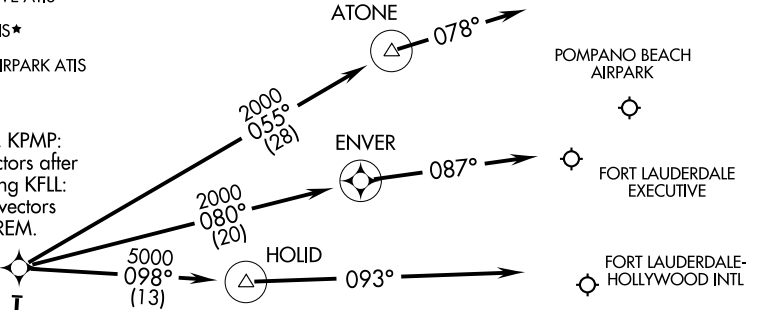
SE-3, 15 DEC 2011 to 12 JAN 2012

SE-3, 15 DEC 2011 to 12 JAN 2012

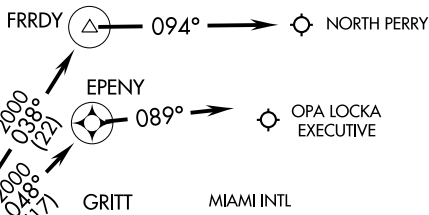
CURSO TWO ARRIVAL (RNAV) (Arrival Routes)

MIAMI APP CON
124.85 322.3
MIAMI INTL ATIS
119.15
FORT LAUDERDALE-HOLLYWOOD INTL ATIS
135.0
FORT LAUDERDALE EXECUTIVE ATIS
119.85
KENDALL TAMIAMI-EXECUTIVE ATIS
124.0
NORTH PERRY ATIS
135.475
OPA LOCKA EXECUTIVE ATIS
125.9
HOMESTEAD ARB ATIS*
132.275 269.9
POMPANO BEACH AIRPARK ATIS
120.55

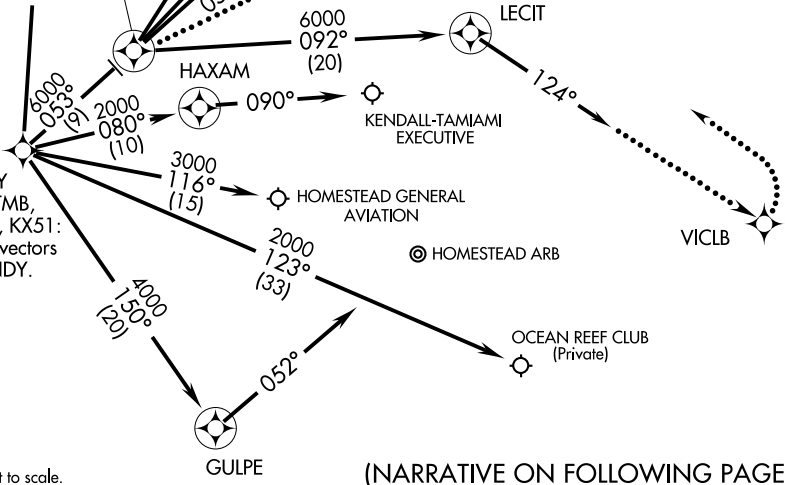
JAREM
Landing KFXE, KPMP:
Expect radar vectors after
JAREM. Landing KFL:
Expect radar vectors
prior to JAREM.



JODPO
KMIA Landing East:
Expect radar vectors
prior to JODPO. Landing KOPF,
KHWO: expect
radar vectors
prior to JODPO.



MNNNDY
Landing KTMB,
KHST, K07FA, KX51:
Expect radar vectors
after MNNNDY.



NOTE: Chart not to scale.

(NARRATIVE ON FOLLOWING PAGE)

SE-3, 15 DEC 2011 to 12 JAN 2012

SE-3, 15 DEC 2011 to 12 JAN 2012

CURSO TWO ARRIVAL (RNAV)

ARRIVAL ROUTE DESCRIPTION

KMIA Landing East Rwy 08R/08L/09/12: From over MNNDY via 053° track to JODPO, then fly heading 053°. Expect radar vectors to final approach course.

KMIA Landing West Rwy 26R/26L/27/30: From over MNNDY via 053° track to JODPO, then via 092° track to LECIT, then fly heading 124°. Expect radar vectors to final approach course.

Landing KPMP: From over MNNDY via 011° track to JAREM, then via 055° track to ATONE, then fly heading 078°. Expect radar vectors to final approach course.

Landing KFXE: From over MNNDY via 011° track to JAREM, then via 080° track to ENVER, then fly heading 087°. Expect radar vectors to final approach course.

Landing KFLL: From over MNNDY via 011° track to JAREM, then via 098° track to HOLID, then fly heading 093°. Expect radar vectors to final approach course.

Landing KHWO: From over MNNDY via 053° track to JODPO, then via 038° track to FRRDY, then fly heading 094°. Expect radar vectors to final approach course.

Landing KOPF: From over MNNDY via 053° track to JODPO, then via 048° track to EPENY, then fly heading 089°. Expect radar vectors to final approach course.

Landing KTMB: From over MNNDY via 080° track to HAXAM, then fly heading 090°. Expect radar vectors to final approach course.

Landing KX51: From over MNNDY via 116° track to KX51.

Landing K07FA: From over MNNDY via 123° track to K07FA.

Landing KHST: From over MNNDY via 150° track to GULPE, then fly heading 052°. Expect radar vectors to final approach course.

LOST COMMUNICATIONS:

KMIA Landing East: Track to JODPO, then proceed direct GRITT, intercept Rwy 09 final approach course, conduct approach.

KMIA Landing West: Track to LECIT, then proceed direct VICLB, turn left to intercept Rwy 30 final approach course, conduct approach.

SE-3, 15 DEC 2011 to 12 JAN 2012

SE-3, 15 DEC 2011 to 12 JAN 2012

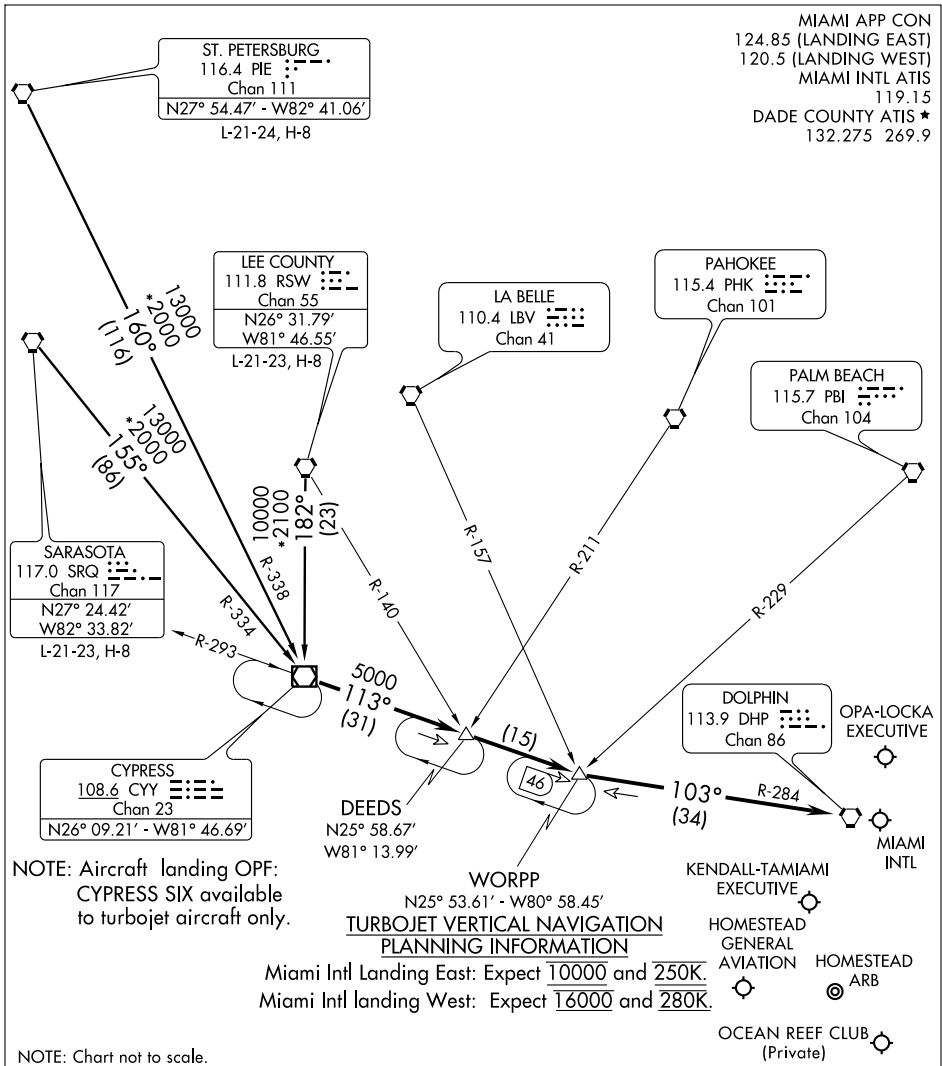
(CYY.CYY6) 11181

CYPRESS SIX ARRIVAL

ST-257 (FAA)

MIAMI, FLORIDA

MIAMI APP CON
 124.85 (LANDING EAST)
 120.5 (LANDING WEST)
 MIAMI INTL ATIS 119.15
 DADE COUNTY ATIS ★ 132.275 269.9



SE-3, 15 DEC 2011 to 12 JAN 2012

SE-3, 15 DEC 2011 to 12 JAN 2012

NOTE: Aircraft landing OFF:
 CYPRESS SIX available
 to turbojet aircraft only.

**TURBOJET VERTICAL NAVIGATION
 PLANNING INFORMATION**
 Miami Intl Landing East: Expect 10000 and 250K.
 Miami Intl Landing West: Expect 16000 and 280K.

NOTE: Chart not to scale.

LEE COUNTY TRANSITION (RSW.CYY6): From over RSW VORTAC via RSW R-182 to CYY VOR/DME. Thence. . . .

ST. PETERSBURG TRANSITION (PIE.CYY6): From over PIE VORTAC via PIE R-160 and CYY R-338 to CYY VOR/DME. Thence. . . .

SARASOTA TRANSITION (SRQ.CYY6): From over SRQ VORTAC via SRQ R-155 and CYY R-334 to CYY VOR/DME. Thence. . . .

. . . .From over CYY VOR/DME via CYY R-113 to WORPP INT, then via DHP R-284 to DHP VORTAC. Expect radar vectors to final approach course.

CYPRESS SIX ARRIVAL

(CYY.CYY6) 11181

MIAMI, FLORIDA

DVALL ONE ARRIVAL (DVALL.DVALL1)

ST-257 (FAA)

MIAMI, FLORIDA

MIAMI APP CON
120.5
MIAMI INTL ATIS
119.15
FORT LAUDERDALE-HOLLYWOOD
ATIS 135.0

LA BELLE
110.4 LBV 
Chan 41

POMPANO BEACH
AIR PARK


FORT LAUDERDALE EXECUTIVE

FORT LAUDERDALE-
HOLLYWOOD INTL

OPA-LOCKA
EXECUTIVE

WEVER
N25°33.14' - W80°54.82'
**TURBOJET VERTICAL NAVIGATION
PLANNING INFORMATION**

Miami Intl landing east: Expect clearance
to cross at 10000' and 250K.
Miami Intl landing west: Expect clearance
to cross at 14000' and 250K.

DOLPHIN
113.9 DHP 
Chan 86
N25°48.00' - W80°20.94'

MIAMI INTL

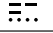
KENDALL-TAMIAMI
EXECUTIVE


HOMESTEAD ARB

DVALL
N25°30.88'
W80°59.94'

FAMIN
N25°35.14'
W80°50.30'

CARNU
N25°08.30'
W81°19.54'

MARATHON
260 MTH 
N24°42.71' - W81°05.72'
L-23, H-8

KEY WEST
113.5 EYW 
Chan 82
N24°35.15' - W81°48.03'
L-21-23, H-8

NOTE: DME Required.
NOTE: Chart not to scale.

KEY WEST TRANSITION (EYW.DVALL1): From over EYW VORTAC via EYW R-037 to DVALL INT. Thence. . . .

MARATHON TRANSITION (MTH.DVALL1): From over MTH NDB via bearing 009° to DVALL INT. Thence. . . .

. . . .From over DVALL INT via DHP R-248 to DHP VORTAC. Expect radar vectors to final approach course after FAMIN INT.

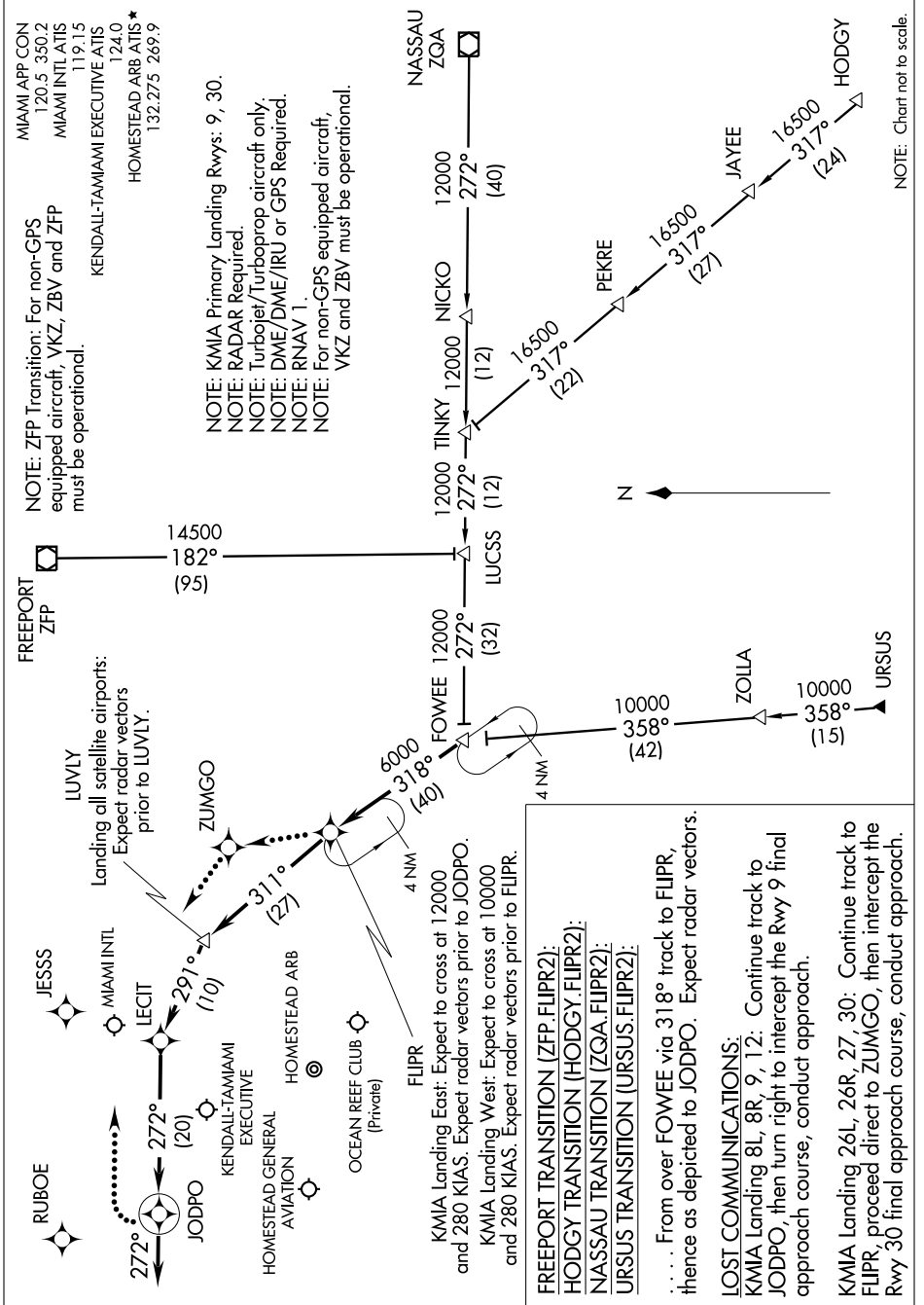
DVALL ONE ARRIVAL (DVALL.DVALL1)

MIAMI, FLORIDA

FLIPR TWO ARRIVAL (RNAV)

MIAMI, FLORIDA

SE-3, 15 DEC 2011 to 12 JAN 2012

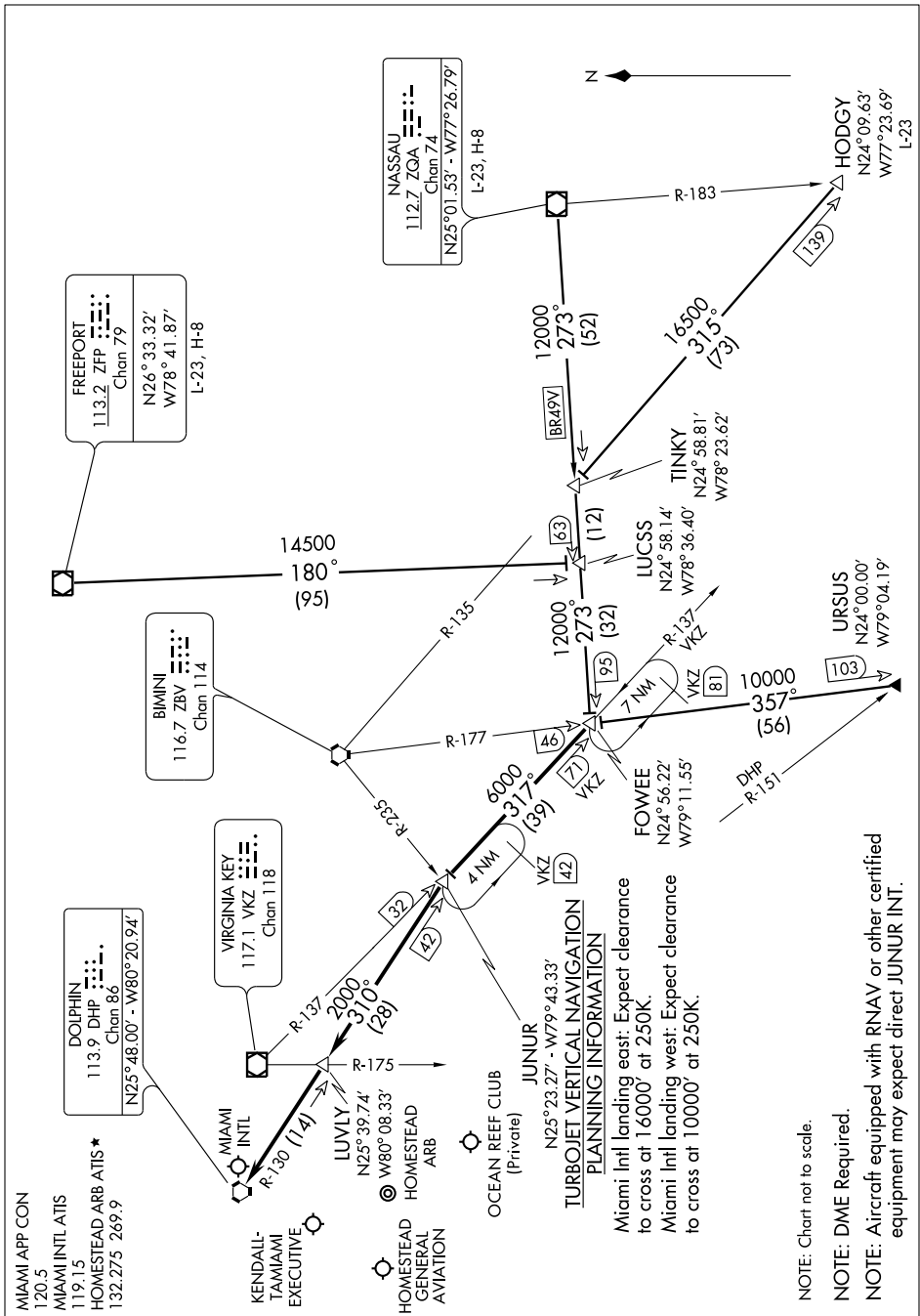


FLIPR TWO ARRIVAL (RNAV)

MIAMI, FLORIDA

SE-3, 15 DEC 2011 to 12 JAN 2012

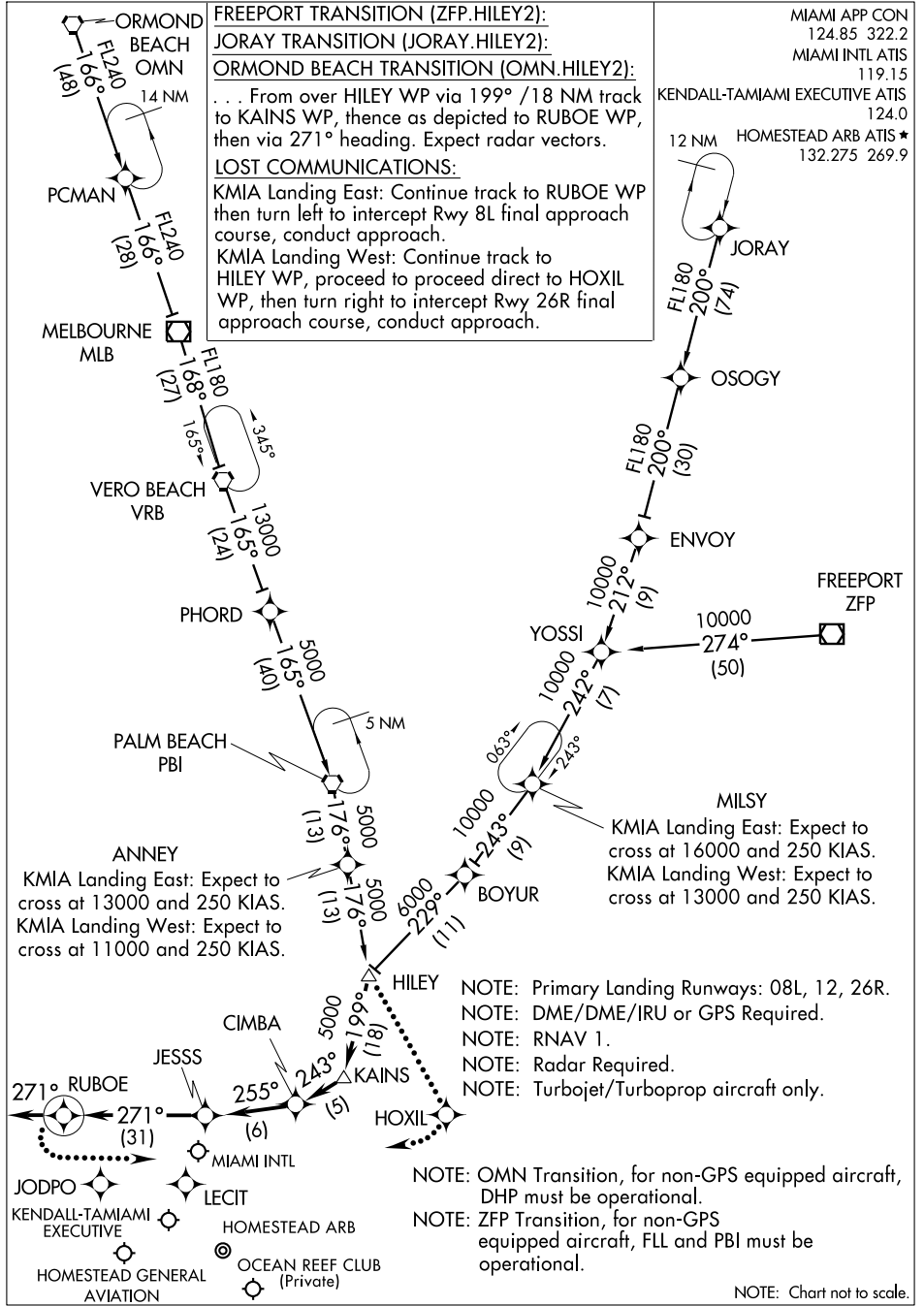
SE-3, 15 DEC 2011 to 12 JAN 2012



SE-3, 15 DEC 2011 to 12 JAN 2012

HILEY TWO ARRIVAL (RNAV)

MIAMI, FLORIDA



SE-3, 15 DEC 2011 to 12 JAN 2012

SE-3, 15 DEC 2011 to 12 JAN 2012

HILEY TWO ARRIVAL (RNAV)

MIAMI, FLORIDA

MIAMI APP CON
120.5 350.20
MIAMI INTL ATIS
119.15
KENDALL TAMiami EXECUTIVE ATIS
124.00
NORTH PERRY ATIS
135.475
OPA LOCKA ATIS
125.90

ARRIVAL ROUTE DESCRIPTION

BAGGS TRANSITION (BAGGS.SSCOT1):

SEMINOLE TRANSITION (SZW.SSCOT1):

TAYLOR TRANSITION (TAY.SSCOT1):

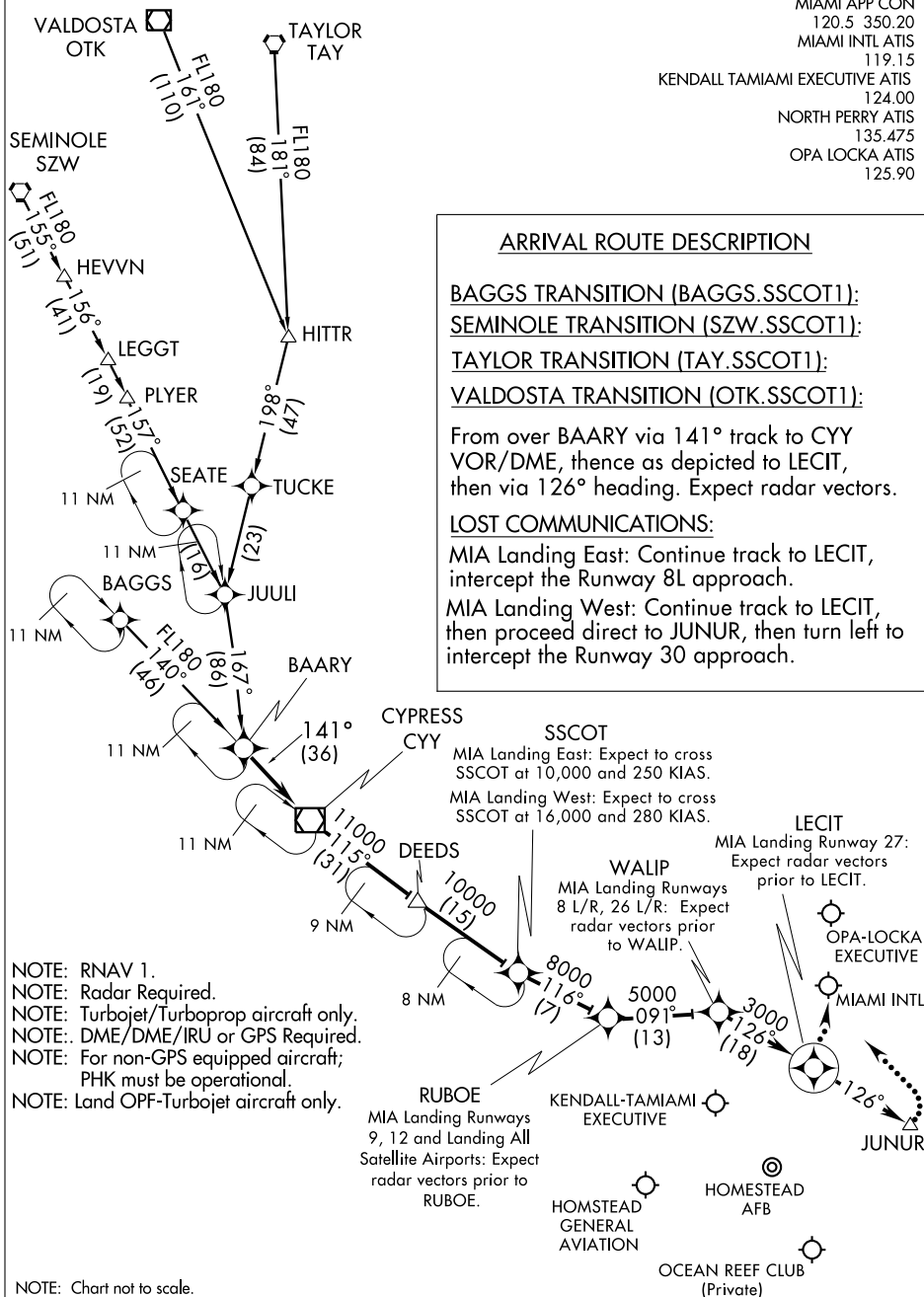
VALDOSTA TRANSITION (OTK.SSCOT1):

From over BAARY via 141° track to CY Y VOR/DME, thence as depicted to LECIT, then via 126° heading. Expect radar vectors.

LOST COMMUNICATIONS:

MIA Landing East: Continue track to LECIT, intercept the Runway 8L approach.

MIA Landing West: Continue track to LECIT, then proceed direct to JUNUR, then turn left to intercept the Runway 30 approach.



SSCOT
MIA Landing East: Expect to cross SSCOT at 10,000 and 250 KIAS.
MIA Landing West: Expect to cross SSCOT at 16,000 and 280 KIAS.

WALIP
MIA Landing Runways 8 L/R, 26 L/R: Expect radar vectors prior to WALIP.

LECIT
MIA Landing Runway 27: Expect radar vectors prior to LECIT.

RUBOE
MIA Landing Runways 9, 12 and Landing All
Satellite Airports: Expect radar vectors prior to RUBOE.

- NOTE: RNAV 1.
- NOTE: Radar Required.
- NOTE: Turbojet/Turboprop aircraft only.
- NOTE: DME/DME/IRU or GPS Required.
- NOTE: For non-GPS equipped aircraft; PHK must be operational.
- NOTE: Land OPF-Turbojet aircraft only.

NOTE: Chart not to scale.

SE-3, 15 DEC 2011 to 12 JAN 2012

SE-3, 15 DEC 2011 to 12 JAN 2012