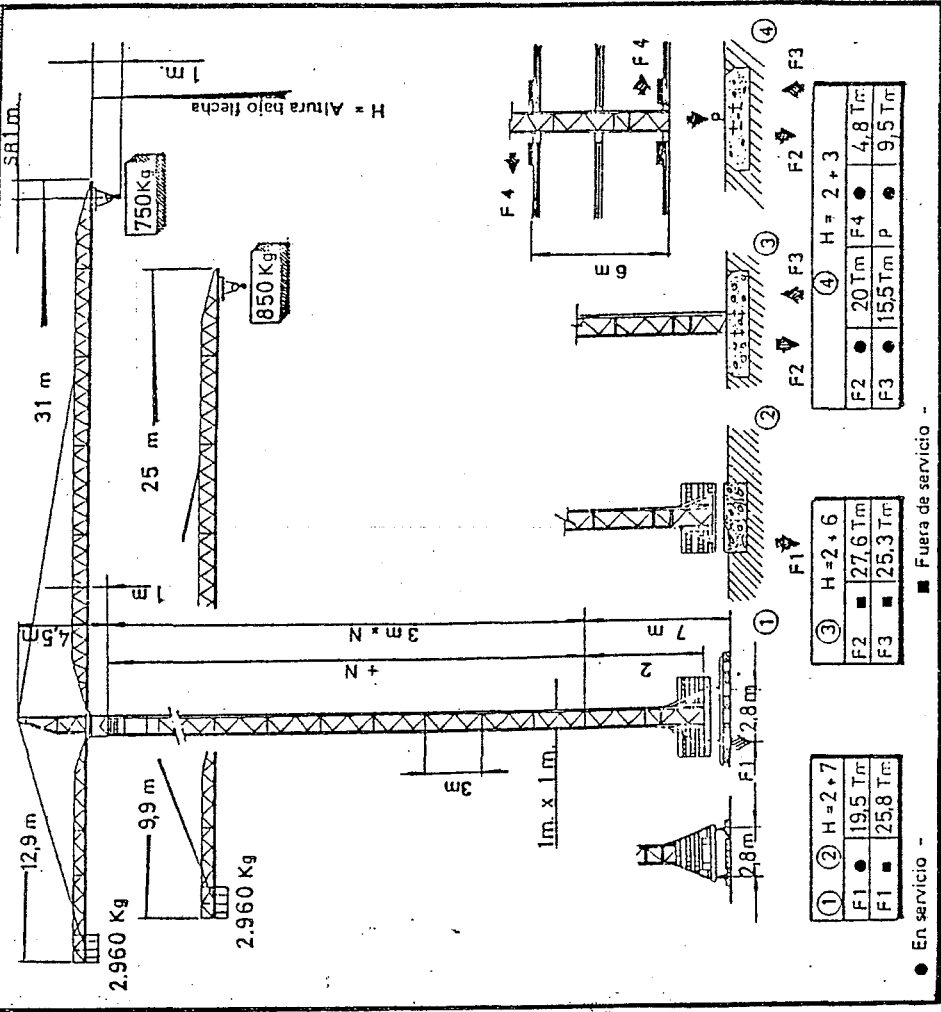

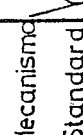

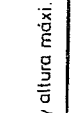
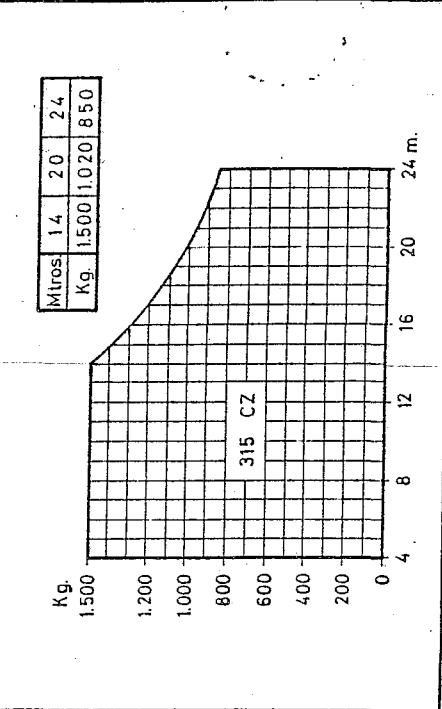
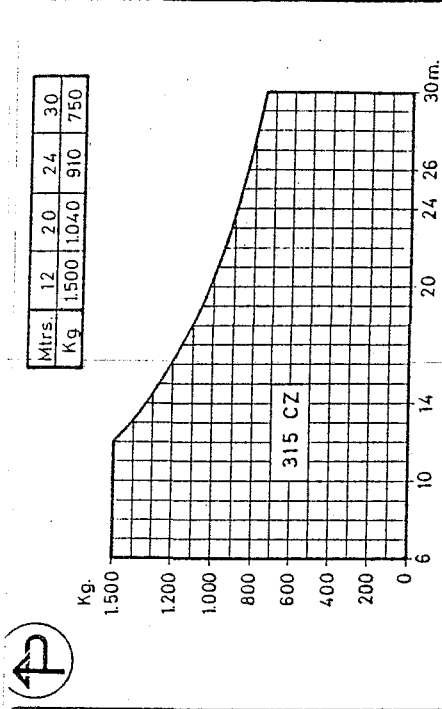


315 CZ



Composición		H			
Torre	m	1	2	3	4
2 + 0	8	7,5	7	7	
2 + 1	11	10,5	10	10	
2 + 3	17	16,5	16	16	
2 + 5	23	22,5	22		
2 + 6	26	25,5	25		
2 + 7	29	28,5	28		
2 + 8	32	31,5	31		
2 + 10	38	37,5	37		

MECANISMO ELEVACION			
Mecanismo Standard		20 m/min. 1500Kg.	
2 V 7		40 m/min. 750Kg.	
7,5/7,5 CV.		Pequeña velocidad	
		Gran velocidad	



Version Standard	ORM	0,9 r.p.m.	3 m.kg.	Potencia eléctrica necesaria: 10KVA
Orientación	TR	30 m.min.	5 m.kg.	Corriente trifásica 220/380V-50Hz
Distribución	CPRM	36 m.min.	2 m.kg.	Peso de la grua sin lastre: 10,5 Tm
Contrapeso de base 22 Tm.				
El peso de grua indicado corresponde al caso 1 con flecha y altura máxi.				