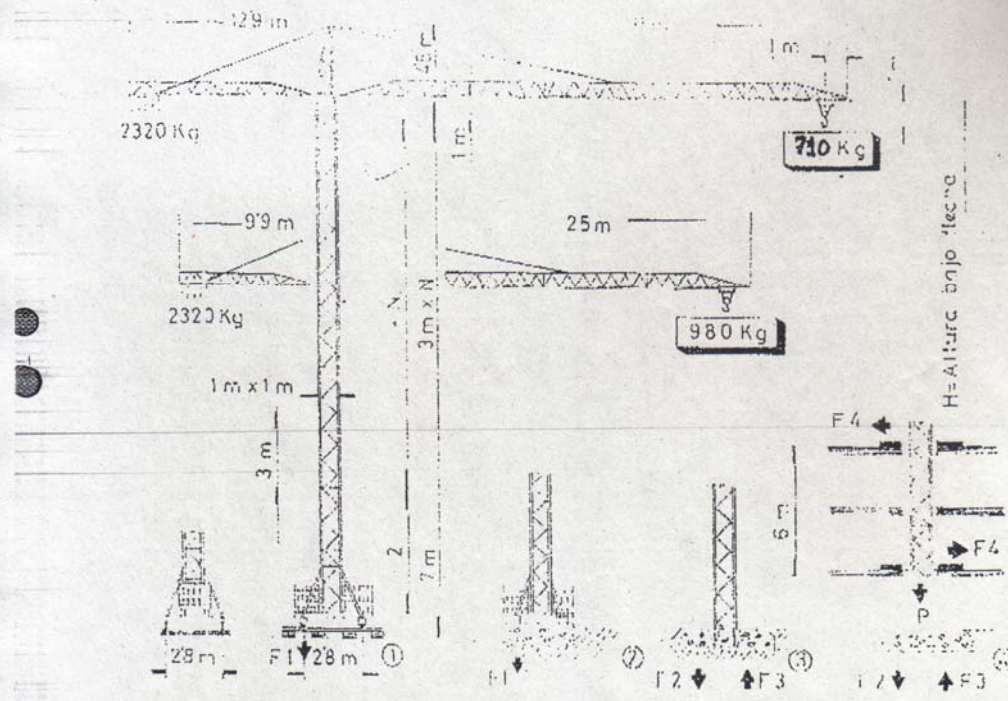


# 316 - AZ



|             |
|-------------|
| ① y ② H=2+8 |
| F1 • 209 Tm |
| F1 • 27 Tm  |

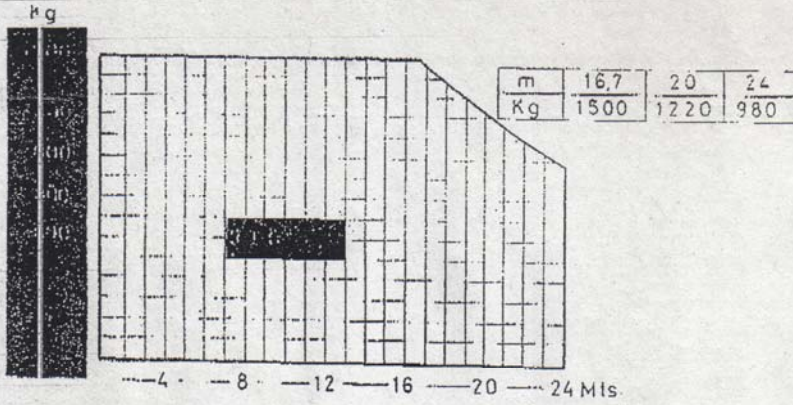
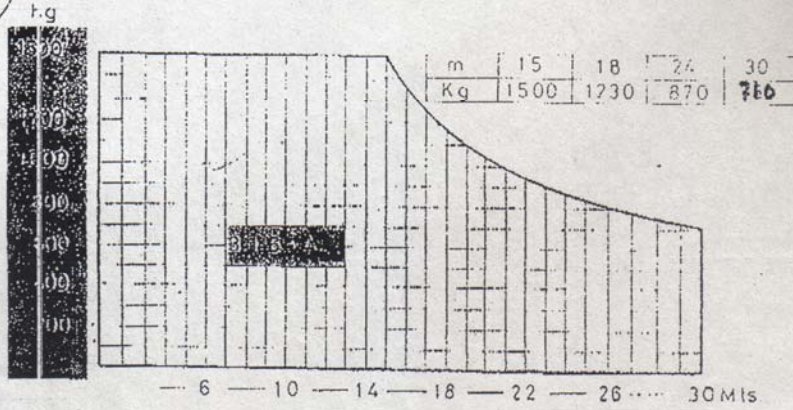
|             |
|-------------|
| ③ H=2+7     |
| F2 • 301 Tm |
| F3 • 263 Tm |

|             |             |
|-------------|-------------|
| ④ H=2+3     |             |
| F2 • 214 Tm | F4 • 5 Tm   |
| F3 • 162 Tm | P • 10,7 Tm |

• En servicio - No servicio      ■ Fuera servicio - Fora do serviço

### ELEVACION - ELEVACÃO

| VERSION    | Diagram | Speed / Capacity   | COMPOSIC TORRE | H  |      |    |    |
|------------|---------|--------------------|----------------|----|------|----|----|
|            |         |                    |                | 1  | 2    | 3  | 4  |
| STANDARD   |         | 22.5m/min 1500 Kg  |                |    |      |    |    |
| 2 v 10     |         | 45 m/min 750 Kg    |                |    |      |    |    |
| 10/10 CV   |         |                    | 2+0            | 8  | 7,5  | 7  | 7  |
| EUROPEA    |         | 25 m/min 1500Kg    | 2+1            | 11 | 10,5 | 10 | 10 |
| PC 12 B    |         | 50 m/min 750Kg     | 2+3            | 17 | 16,5 | 16 | 16 |
| 12/12/4 CV |         | 6 m/min Pose       | 2+5            | 23 | 22,5 | 22 |    |
|            |         | PEQUEÑA VELOCIDAD  | 2+7            | 29 | 28,5 | 28 |    |
|            |         | PEQUENA VELOCIDADE | 2+8            | 32 | 31,5 | 31 |    |
|            |         | GRAN VELOCIDAD     | 2+9            | 35 | 34,5 | 34 |    |



|                 |            |          |          |                                     |
|-----------------|------------|----------|----------|-------------------------------------|
| VERSION         | CONDAL     |          |          |                                     |
| ORIENTACION     | 90°        | 1,9 m    | 1 m Kg   |                                     |
| TRASLACION      | TN         | 30 m/min | 2,7 m Kg | Potencia electrica necesaria 21 KVA |
| DISTRIBUCION    | CPRM       | 33 m/min | 2 m Kg   | Corriente trifasica 220/380 V 50 Hz |
| VERSION EUROPEA | 90°        |          |          |                                     |
| ORIENTACION     | 90°        | 0,8 m    | 4 m Kg   |                                     |
| TRASLACION      | TSL        | 25 m/min | 2,7 m Kg | Pase de la grua sin lastrin 220 m   |
| DISTRIBUCION    | CPRM       | 36 m/min | 3,5 m Kg |                                     |
| VERSION EUROPEA | 90°        |          |          |                                     |
| ORIENTACION     | 90°        | 0,8 m    | 4 m Kg   | Potencia electrica necesaria 21 KVA |
| TRASLACION      | TSL        | 25 m/min | 2,7 m Kg | Corriente trifasica 220 380V 50 Hz  |
| DISTRIBUCION    | CPRM       | 36 m/min | 3 m Kg   | Pase de la grua sin lastrin 220 m   |
| Contrapeso de   | base 28 Tm |          |          |                                     |
| Contrapeso de   | base 28 Tm |          |          |                                     |